



# BD Integrated Diagnostic Solutions Catalogue

Transforming today's diagnostic challenges into tomorrow's diagnostic excellence.



**BD**

Advancing the world of health™

# The BD IDS Catalogue

BD business segments	2	<b>BD Integrated Diagnostic Solutions (IDS)</b>	<b>5</b>
The BD commitment	2	Diagnostic stewardship across the care continuum	5
BD Signature Programmes	3	Our diagnostic vision	6
Product manufacturing and supply	4	Partnering with our customers to help them	6
		Our solutions	7
		Our business platforms	8
		Committed to sustainable healthcare	10
		Made for today, tomorrow and for what's needed next	10
		Sustainability 2030+	11

## BD business segments



## The BD commitment

BD is one of the largest global medical technology companies in the world and is *advancing the world of health*<sup>™</sup> by improving medical discovery, diagnostics and the delivery of care. We support the heroes on the front lines of healthcare by developing innovative technology, services and solutions that help advance both clinical therapy for patients and clinical process for healthcare providers.

At BD, we have a passion and commitment to helping enhance the safety and efficiency of the care delivery process for patients and clinicians alike, enabling laboratory scientists to accurately detect disease and advancing researchers' capabilities to develop the next generation of diagnostics and therapeutics.

Through our close customer collaboration, BD aspires to enhance outcomes, lower costs, increase efficiencies, improve safety and expand access to healthcare.



Global reach



75,000 associates



Patient driven



Innovation oriented

# BD Signature Programmes



## Patient safety

**Prevention of errors and adverse events to patients associated with healthcare**

- Healthcare-associated infection prevention, treatment and management
- Sepsis diagnosis, treatment and management
- Antimicrobial stewardship implementation
- Medication error prevention



## Healthcare workers

**Protection of healthcare workers against safety hazards to help address staff shortages and drive staff satisfaction**

- Addressing psychological, ergonomics, bloodborne pathogens, radiation and hazardous drug exposure in the workplace
- Enabling more time for patient care through standardisation and automation
- Helping build and promote a culture of healthcare worker safety through differentiated training and education



## Efficiency

**Supporting healthcare institutions in reducing waste and inefficiencies, to unlock their hidden capacity and drive financial sustainability**

- Identifying waste and inefficiencies throughout the patient journey
- Standardising and automating processes within and between departments to create efficiency gains
- Helping build healthcare resilience to support the patients of tomorrow



## Product manufacturing and supply

BD is focused on improving consistency, quality, efficiency with an integrated and simplified product portfolio aimed to improve supply continuity and increase cost savings.

BD strives to provide high-quality product reliability all over the world by focusing on a high rate of customer order fulfillment, minimising backorders and maintaining enough production capacity and flexibility to address spikes in demand and supply disruptions. Our top strategic imperative as a business is driving operational effectiveness to improve the customer experience by improving supply availability and product quality.

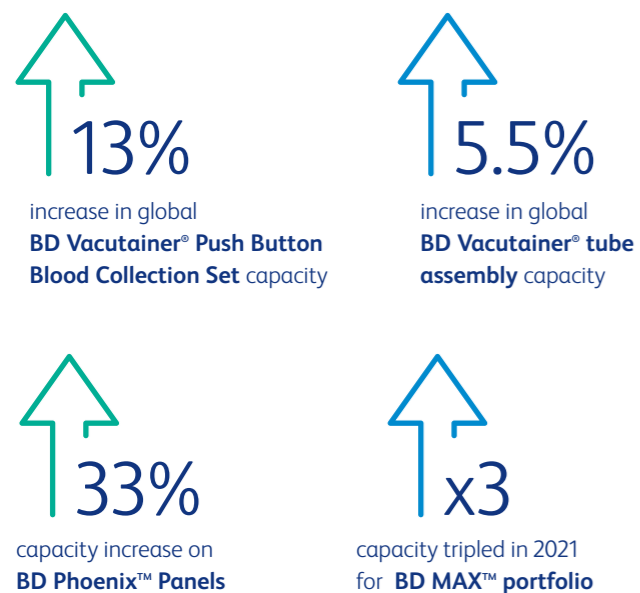
### BD Manufacturing Business Continuity Plan

To assure supply, each of the BD sites have continuity plans uniformly written for the worst possible case and are scalable to any size or shape of event (from major earthquake, to a fire in one section of the building, to a pandemic). When an event occurs, all plans are activated to the level required by the event. Key portions of the business continuity plans include IT infrastructure recovery and support, building recovery plans (i.e., engineering, clean-up), relocation plans for functions including use of off-site contract facilities and other BD facilities, clarification of HR policies and procedures and other contracted services. All plans are tested annually in table-top and/or functional exercises.

### BD IDS Inventory Management Plan

The BD IDS Inventory Management Plan is predicated on a “shared” inventory commitment between BD, our distributors and our customers. Provided that each of these three elements builds and maintains some inventory, we will have a much better chance of maintaining critical material supply during an event. BD maintains OTS (On Time Shipment) and OTIF (On Time In Full) targets for orders and measures against these targets monthly.

BD IDS has invested 600 M\$ over the last 3 years, across 18 manufacturing plants to support capacity increase



## BD Integrated Diagnostic Solutions (IDS)

### Diagnostic stewardship across the care continuum

Today, tomorrow and every day, we empower diagnostic champions around the globe to reach for innovative solutions that equip their diagnostic teams and workflows with the tools they need to enable rapid, reliable patient outcomes.

#### At BD, this is our vision for diagnostic stewardship:

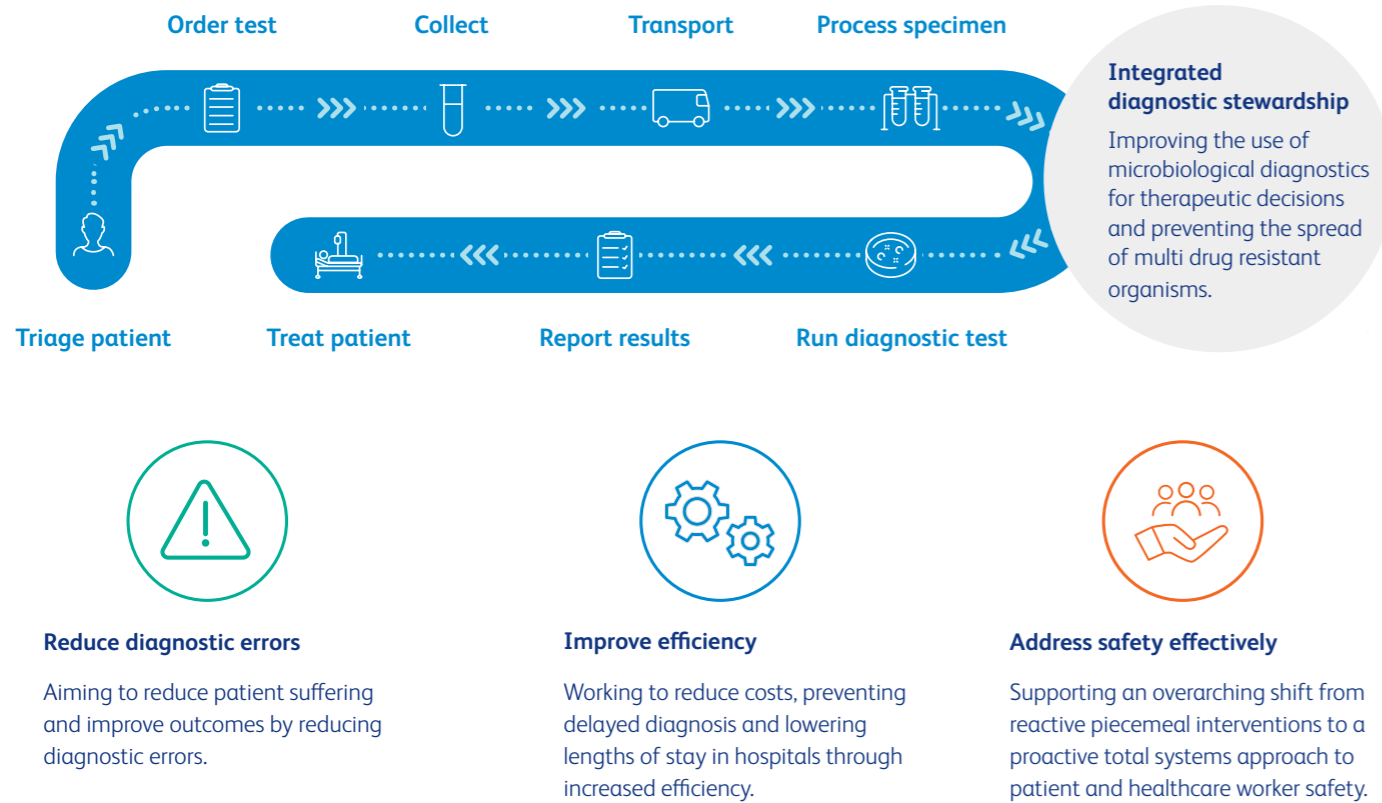
A full systems approach, from patient identification to results reporting. Every step of the diagnostic pathway harmonised to provide reliable results, reduce costs, strengthen process efficiency and instill safety.

One diagnostic test can save a life. And behind a diagnostic test, there are laboratories, hospitals, clinics, patients and families, all with a common interest in ensuring safety, accuracy and timeliness.

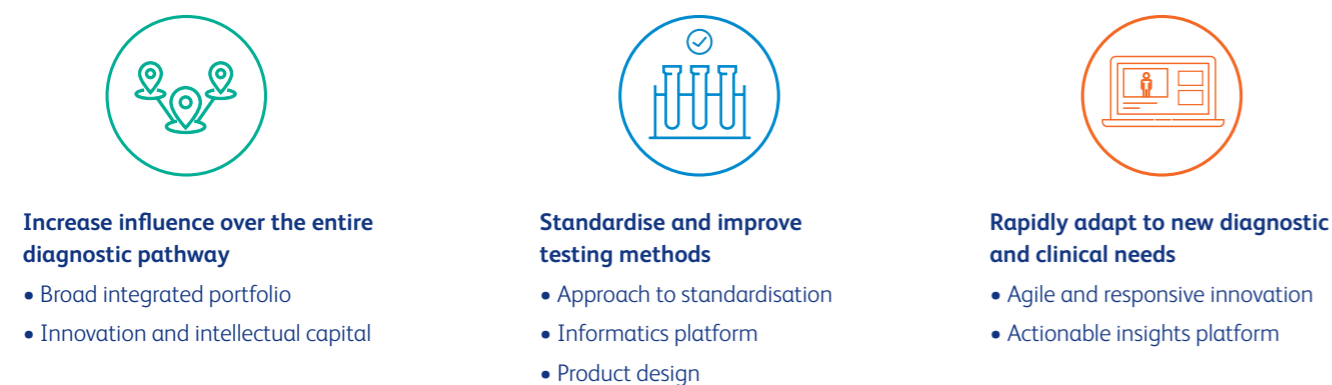
It is our mission to unify every team across the diagnostic pathway and drive diagnostic excellence across the entire care continuum, so that every diagnostic test can make a difference.



# Our diagnostic vision



# Partnering with our customers to help them...



**Professional Services with expert teams across the full diagnostic pathway**

**Customers served**

- Hospitals, laboratories and clinics
- Reference laboratories
- Industrial/Pharmaceutical laboratories
- Physicians' office practices
- Alternate site healthcare
- Academic and government institutions
- Blood banks
- Public health agencies
- Clinical research

# Our solutions

At BD, we provide integrated solutions of products and services that comprehensively support healthcare providers across care areas.

A few areas where we partner with customers to optimise patient care through diagnostic stewardship, from specimen collection to results reporting include:

**BD Respiratory Infection Solution** to support your fight against COVID-19, influenza and respiratory syncytial virus (RSV) from collection to results and in different care settings to help provide accurate, timely results to adhere to local recommendations.

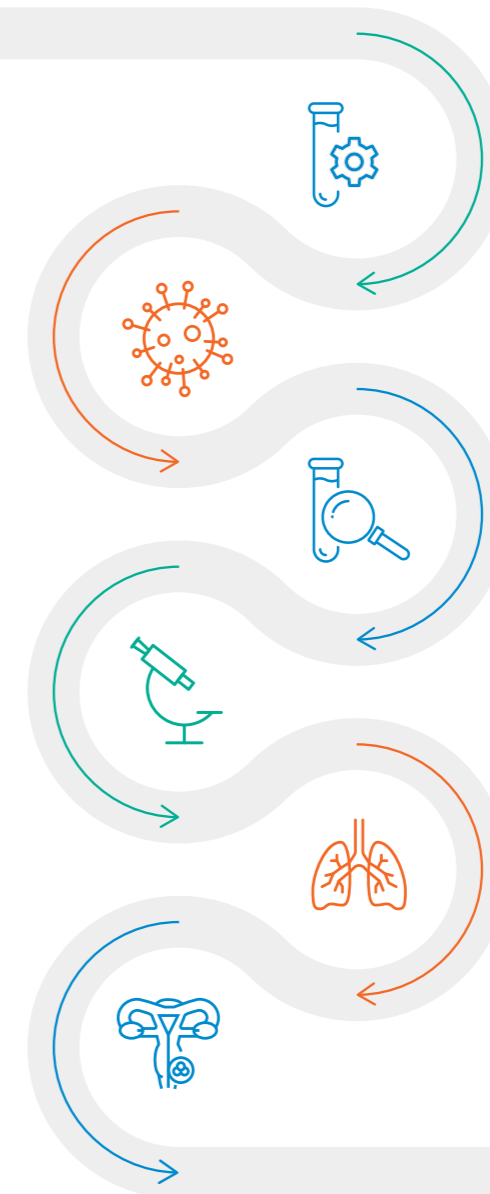
**BD Integrated Microbiology Solution** to help improve patient outcomes and diagnostic stewardship, from specimen collection to results, by delivering sample integrity, efficiency, performance, reliability and accuracy in the microbiology lab.

**BD Cervical Cancer Screening Solution** to help optimise patient pathway management in cytology and HPV screening from collection to result. This solution includes extended genotyping and increased disease detection to help ensure the delivery of trusted, actionable results.

**BD Integrated Specimen Management Solution** to improve diagnostic stewardship along your specimen pathway by delivering safe, easy and digitalised sample collection and storage. With this solution, you can help ensure sample traceability, impacting patient outcomes, safety and efficiency.

**BD Bloodstream Infection (BSI) Solution** to drive diagnostic stewardship along your entire diagnostic pathway, optimising specimen collection and driving actionable, accurate and timely results to adhere to your institutional policies and help improve clinical outcomes and patient care.

**BD Tuberculosis (TB) Solution** to drive diagnostic stewardship along your entire specimen pathway with safe collection and molecular screening to support actionable, accurate and timely results, adhere to institutional policies and help improve clinical outcomes and patient care.



# Our business platforms



## Integrated Specimen Management



BD Integrated Specimen Management helps drive safe and accurate sample management and analysis throughout the patient journey. Our primary focus is to deliver:

- Diagnostic accuracy
- Specimen integrity and quality
- A safe environment for patients and healthcare workers alike
- Positive patient experiences
- Budgetary efficiency



## Integrated Microbiology and Molecular Diagnostics



BD Integrated Microbiology and Molecular Diagnostics include a diverse product offering designed to enhance efficiency and flexibility to deliver accurate, timely results to clinicians and their patients. We continue to innovate with technologies designed to:

- Optimise workflows
- Integrate end-to-end diagnostic processes
- Promote diagnostic stewardship
- Raise productivity with automation



## Women's Health & Cancer



BD Women's Health & Cancer aims to eliminate cervical cancer by providing solutions for:

- Human Papillomavirus (HPV) screening and genotyping
- Identification of pre-cancerous and cancerous lesions
- Automation that can help to enhance both laboratory outcomes and patient management with advanced molecular diagnostic capabilities



## Point of Care



BD Point of Care helps enable healthcare workers to provide rapid testing with confidence, flexibility, accuracy and patient centricity for a range of assays, including:

- SARS-CoV-2
- Influenza A + B
- Group A Streptococcal Pharyngitis
- Respiratory Syncytial Virus (RSV)



## Industrial Microbiology



BD Industrial Microbiology partners with you in eliminating the risk of microbial contamination for the health and safety of your patients and clients. Designed to meet the unique requirements of the industry, our extensive solutions help enable:

- Sterility
- Efficient process validation
- Specific organism testing
- Environmental monitoring



## Professional Services



BD Professional Services are delivered by expert teams of skilled consultants to help you integrate effective end-to-end solutions so you can achieve your diagnostic targets, supporting you in:

- Solution creation, by tailoring the solution around your needs and the definition of valuable metrics for success.
- Solution implementation, by ensuring quality, timely delivery according to your relevant success measurements.
- Solution sustainment, by supporting continuous education of the workforce and accompanying your KPI goals.

# Committed to sustainable healthcare

The world of health never stands still. And for over a century, neither have we.

In a rapidly evolving world where healthcare and technology are converging, sustainable healthcare is no longer limited to the global environmental challenges we are currently facing.

**It means:**

Devising adaptable solutions that protect patients and caregivers, now and in the future.

Advancing breakthrough discoveries in research that tackle healthcare's biggest challenges and changes.

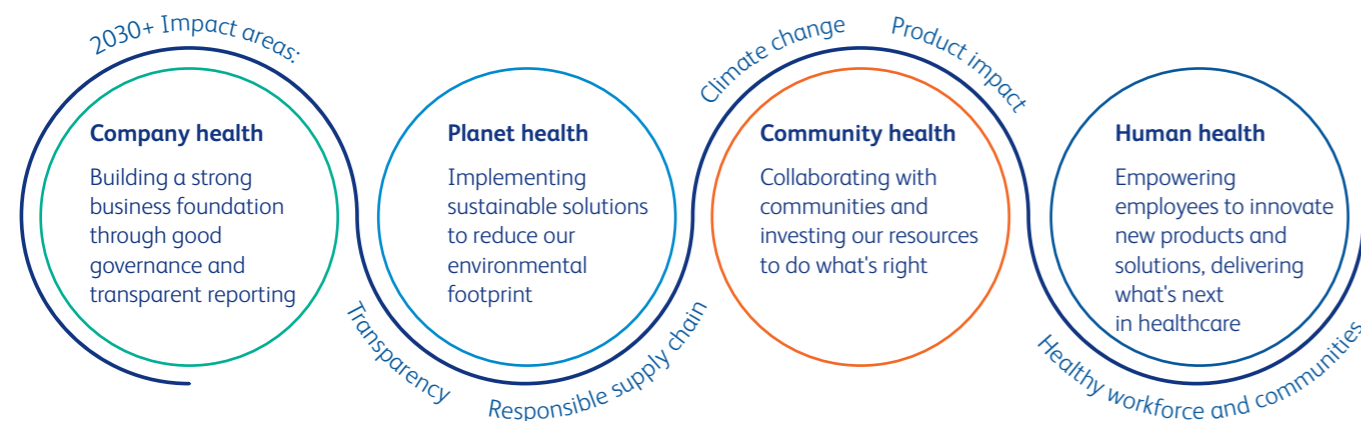
Embracing resilience at every step of the care pathway to continue doing what we have always done best —providing the right care, at the right place, at the right time.



# Made for today, tomorrow and for what's needed next

At BD, we view sustainability as a portfolio of complementary initiatives and actions that help us achieve our purpose of *advancing the world of health*.

We see the modern social and environmental challenges our world faces as opportunities to make a difference while strengthening our company.



# Sustainability 2030+

**Climate change**

Minimise our contribution to global emissions and utilise our capabilities to address unmet health needs for climate-vulnerable populations.

**Our climate change targets**

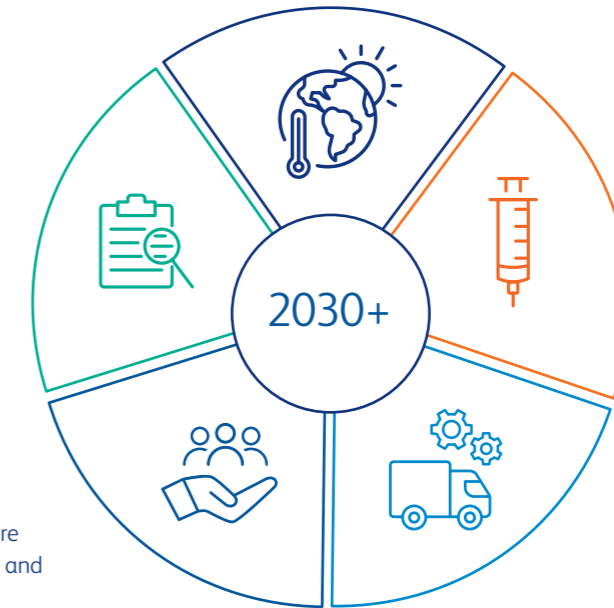
Commitment to reduce Scope 1 and 2 GHG emissions 46% by 2030 (from a 2019 baseline) and to be carbon neutral across direct operations by 2040. This science-based target is aligned with 1.5°C global emissions reduction pathway.

**Transparency**

Invite trust across stakeholder groups through transparent performance reporting on environmental, social and governance issues relevant to our business.

**Healthy workforce and communities**

Maintain a healthy and thriving workforce that cultivates our culture of inclusion, safety and well being and contributes to community health.



**Product impact**

Reduce the environmental impact of our portfolio and address the sustainability needs of our customers.

**Responsible supply chain**

Create a supply chain adaptable to disruption and able to contribute to strong environmental and social performance.

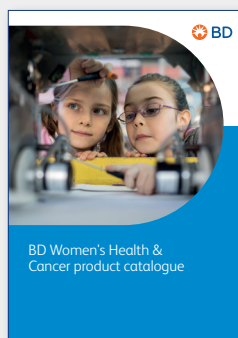
**Under our Sustainability 2030+ ESG\* strategy, we've made commitments in specific areas where we see the most opportunity for BD to create meaningful, measurable change.**

Ultimately, at BD, we know that when everyone works together, we will realise a healthy, resilient world for all.



\*ESG: Environmental, Social and Governance

## Discover the full series of the BD IDS catalogue:



- BD Integrated Specimen Management
- BD Integrated Microbiology and Molecular Diagnostics
- BD Women's Health & Cancer
- BD Industrial Microbiology
- BD Professional Services

 BD MAX™, BD Phoenix™ and the BD Vacutainer® family of products are in vitro diagnostic medical devices bearing a CE mark.

BD Switzerland Sàrl, Terre Bonne Park - A4, Route de Crassier 17, 1262 Eysins, Switzerland

[bd.com](https://www.bd.com)

BD, the BD Logo, BD MAX, BD Phoenix and BD Vacutainer are trademarks of Becton, Dickinson and Company or its affiliates.  
© 2022 BD. All rights reserved. BD-74214

