

A Comprehensive Endovascular Solution for Your Continuum of Care



Access | Restore | Sustain



We understand PAD and CLI.

It is our goal, and we believe our responsibility, to provide solutions to improve every touch point of your patient care continuum.

Get to know us.

BD is a pioneer in life-changing medical technology that helps patients with peripheral arterial disease and critical limb ischemia. Dedicated to solving today's most important medical needs, BD continues to relentlessly develop innovations that enhance the physician and patient experience along every point of the patient care continuum.

We do this with one intention:
Advancing the world of health.

Some of the ways we live this commitment each day are by:

- Raising awareness and disseminating critical disease and health education information through our Love Your Limbs™ PAD Awareness Campaign
- Developing programs, such as training sessions and networking events, that foster connections between allied health professionals
- Providing educational grants to promote continued medical education
- Rigorously investing in new product research and development

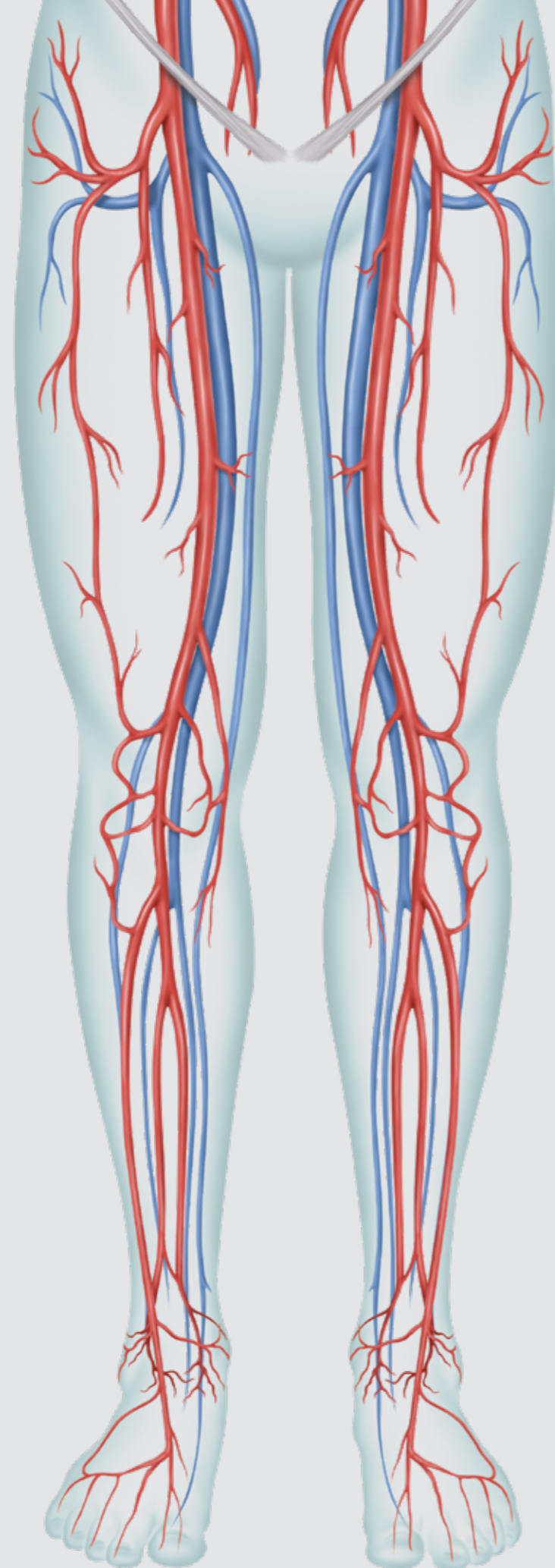
In this incredibly dynamic environment, understanding patient and physician needs are of the utmost importance to us. These relationships guide us, as we continue to push the boundaries of medicine and technology to develop new and better ways to treat PAD and CLI.



We have PAD & CLI solutions

- More than 202 million individuals worldwide are diagnosed with PAD¹
- 1 in 20 people ages 50+ are affected by PAD²
- Individuals with low kidney function are twice as likely to have PAD³

BD offers you a variety of solutions that allow you to **ACCESS** affected areas, and **RESTORE** and **SUSTAIN** blood flow.



ACCESS

Gaining access to areas where blood flow is restricted, while minimizing access site complications, is a key part of treating PAD.

| | |
|--|---|
| Halo One™ Thin-Walled Guiding Sheath | 6 |
| Halo Effect™ Downsizing Procedural Profile with the Halo Effect™ | 7 |
| Crosser™ CTO Recanalization Catheter | 8 |
| Seeker™ Crossing Support Catheter | 8 |

RESTORE

Treatment can be complex. Restoring blood flow to the limbs is a critical step in lessening disease progression.

| | |
|---|----|
| Rotarex™S Rotational Atherothrombectomy System | 9 |
| UltraScore™ 035 Focused Force PTA Balloon | 10 |
| UltraScore™ 014 Focused Force PTA Balloon | 10 |
| Ultraverse™ 035 PTA Dilatation Catheter | 11 |
| Ultraverse™ 018 PTA Balloon Dilatation Catheter | 12 |
| Ultraverse™ 014 PTA Balloon Dilatation Catheter | 13 |
| Ultraverse™ RX PTA Dilatation Catheter | 14 |

SUSTAIN

Maintaining blood flow long-term is paramount to preserving the health of your patient's legs and feet.

| | |
|---|----|
| Lutonix™ 035 Drug Coated Balloon PTA Catheter | 15 |
| Lutonix™ 018 Drug Coated Balloon PTA Catheter | 16 |
| Lutonix™ 014 Drug Coated Balloon PTA Catheter | 17 |
| LifeStent™ Vascular Stent System Franchise | 18 |
| E-Luminexx™ Vascular Stent | 19 |
| LifeStream™ Balloon Expandable Vascular Covered Stent | 20 |
| Covera™ Plus Vascular Covered Stent | 21 |
| Fluency™ Plus Endovascular Stent Graft | 22 |

Each product has different Indications for Use.

Please refer to the relevant product's IFU for all applicable indications, contraindications, warnings, and precautions, in addition to the summary safety information contained at the end of this brochure.

| | |
|-------------------------------|----|
| Product quick reference table | 23 |
|-------------------------------|----|

| | |
|---------------|----|
| Product Codes | 24 |
|---------------|----|

¹ Fowkes, Gerald, R., Rudan, D, et al. (2013). The Lancet, 382 (9901), 1329-1340.

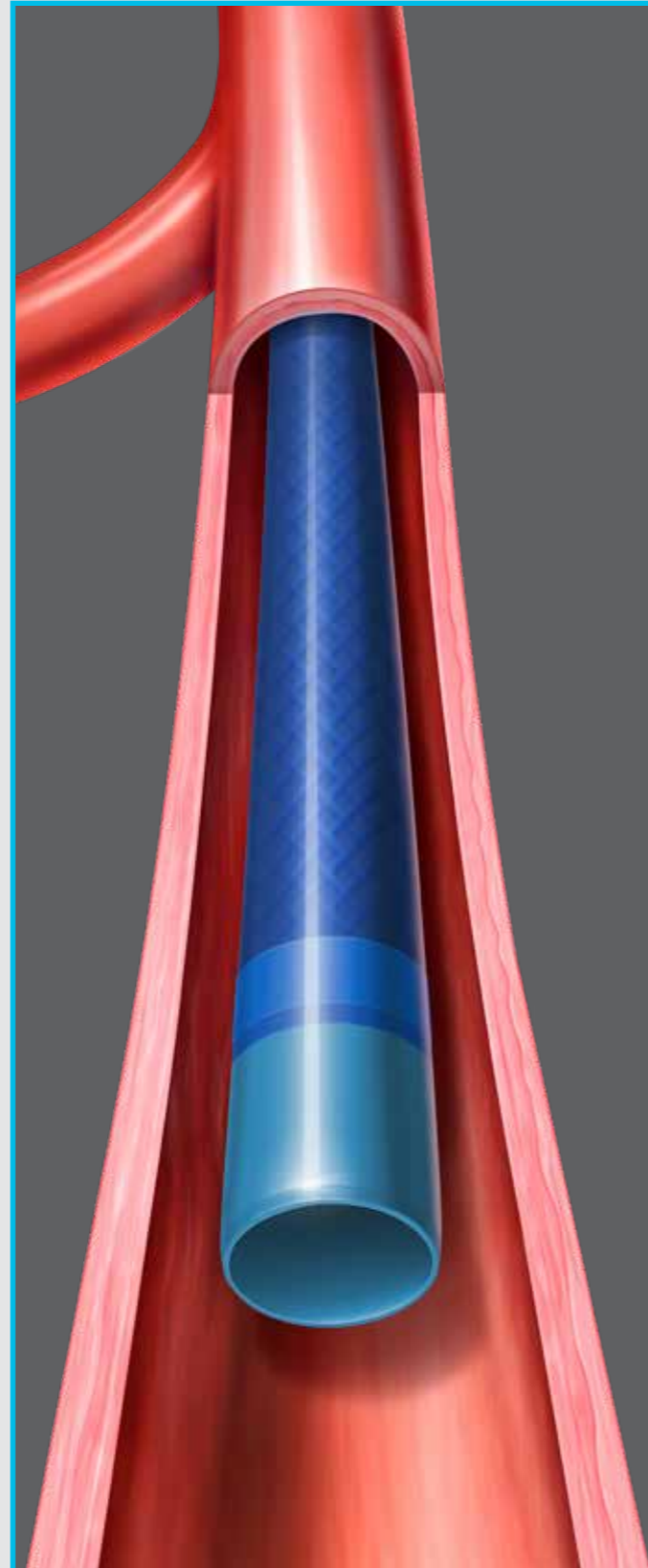
² Sharma, A. et al. (2014). Atherosclerotic peripheral arterial disease of the lower extremities: What every primary care physician should know. Consultant, 54(7): 537-541

³ Olin, J. W. et al. (2010). Peripheral Artery Disease: Current Insight into the Disease and Its Diagnosis and Management. Mayo Clin Proc, 85(7), 678-692.

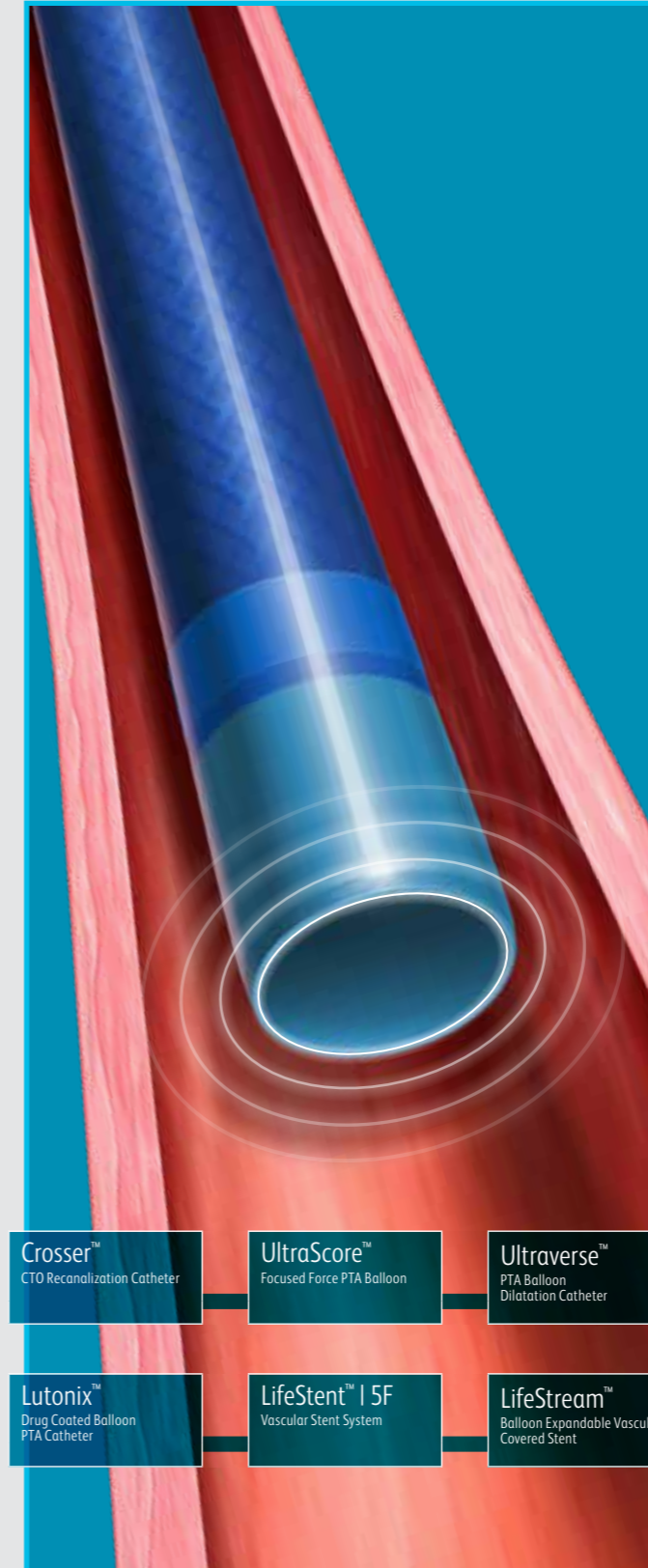
Halo One™ Thin-Walled Guiding Sheath

The Halo One™ Thin-Walled Guiding Sheath provides a 1 French wall thickness which reduces the size of the arteriotomy compared to standard sheaths of the same French size without sacrificing inner diameter. Reinforced by a stainless-steel braid, the shaft construction is designed to provide the flexibility, tensile strength, and kink resistance needed when navigating tortuous anatomies.

- Low profile design reduces arteriotomy size which can help to minimize access site complications¹
- Only thin-walled guiding sheath with lengths suitable for distal peripheral intervention²
- Stainless-steel reinforced shaft construction is designed to perform even in challenging anatomy

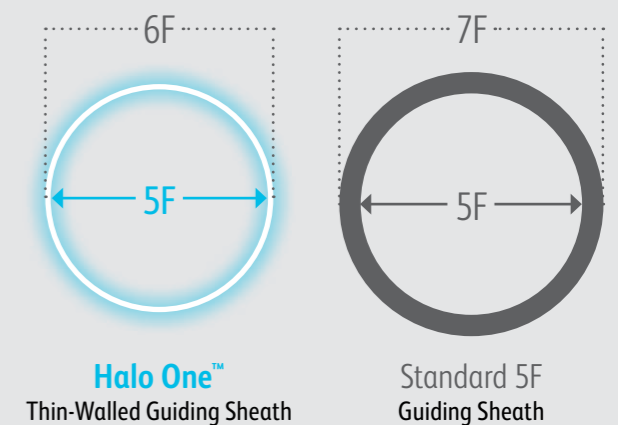


Halo Effect™ Downsizing Procedural Profile with the Halo Effect™



Used in conjunction with BD's innovative portfolio of PAD products, this Halo Effect™, lowers physicians' procedural profile, allowing them to stay low-profile from access to intervention with therapies including CTO crossing, PTA, scoring, DCB, and stenting.³

The Thin-Walled Sheath Design

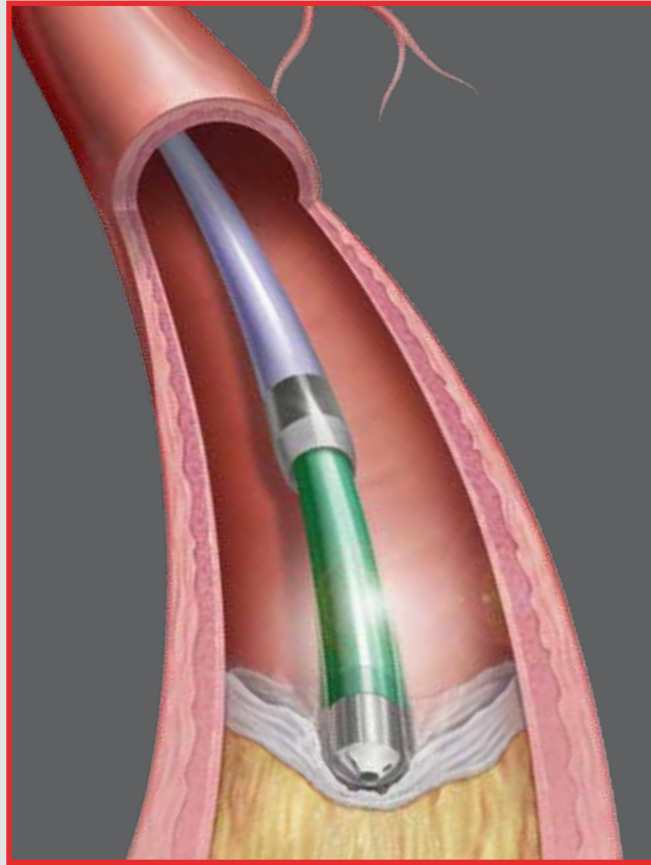


¹ Ortiz, Daniel, et al. "Access site complications after peripheral vascular interventions: incidence, predictors, and outcomes." *Circulation: Cardiovascular Interventions* 7.6 (2014): 821-828.

² Shaft lengths of 45, 70, and 90cm are available in 4F and 5F sizes only.

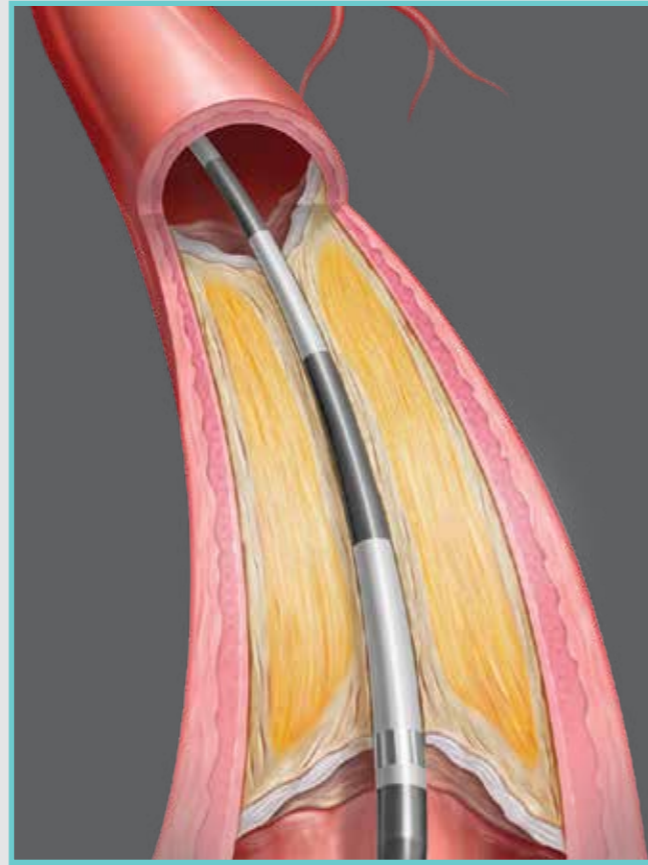
³ The minimum acceptable sheath French size is printed on the package label. Do not attempt to pass devices through a smaller size sheath introducer than indicated on the device label.

Crosser™ CTO Recanalization Catheter



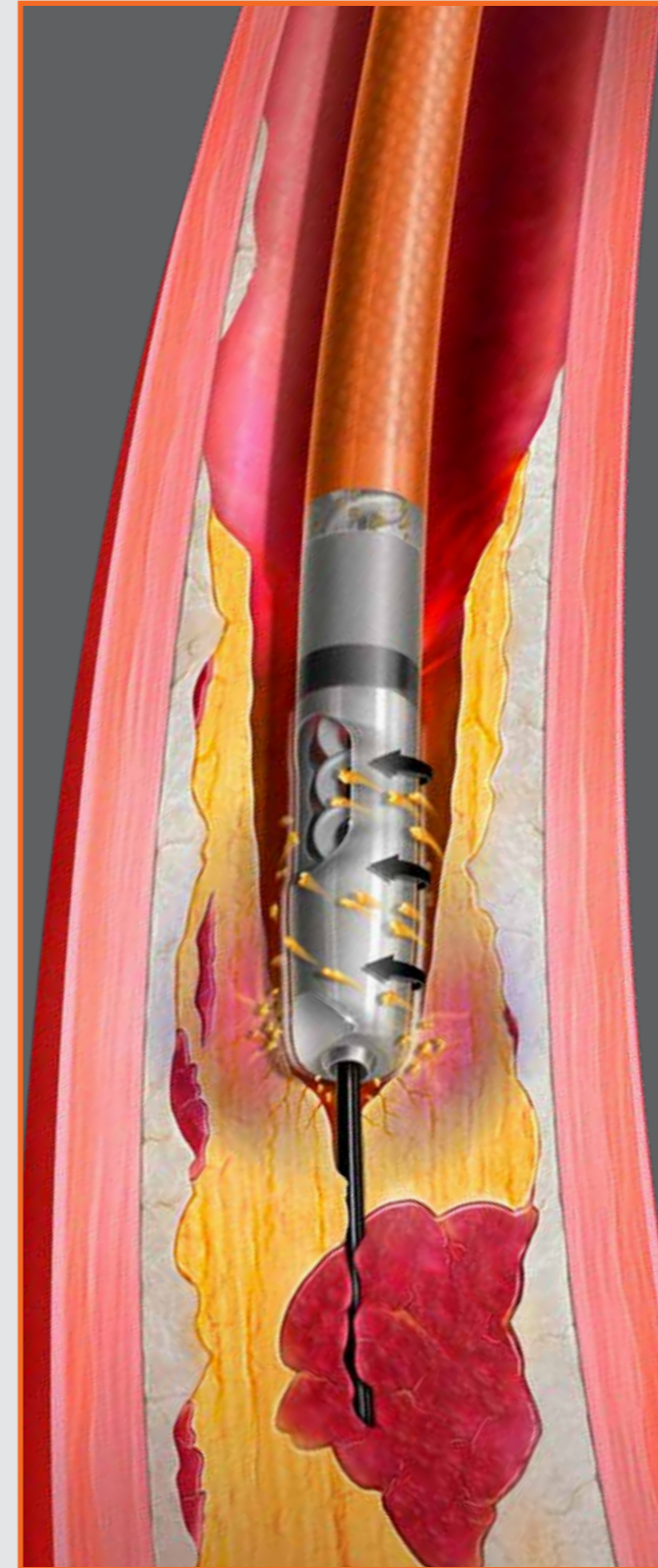
The Crosser™ CTO Recanalization Catheter System is a catheter designed to treat Chronic Total Occlusions (CTOs), total arterial blockages due to PAD, by forming a new canal within the blocked artery to restore blood flow. The Crosser™ Catheter utilizes mechanical impact and cavitation to create a channel through the solid CTO surface within the vessel's lumen, in order to prepare the vessel for subsequent therapies.

Seeker™ Crossing Support Catheter



The Seeker™ Crossing Support Catheter is a catheter designed to reach and cross small vessels and tight stenosis due to PAD. The Seeker™ Catheter has a unique marking system that allows the physician to measure the length of the lesion, helping them to select additional therapies.

Rotarex™ S Rotational Atherectomy System



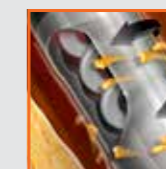
Rotarex™S Rotational Atherothrombectomy Catheters in combination with the Straub Medical Drive System are intended for the percutaneous transluminal removal of thrombotic, thromboembolic and atherothrombotic material from fresh, subacute and chronic occlusions of blood vessels outside the cardiopulmonary, coronary and cerebral circulations. Rotarex™S is indicated for native blood vessels or vessels fitted with stents, stent grafts or native or artificial bypasses outside the cardiopulmonary, coronary and cerebral circulations.

Rotarex™S has four functions in one device:

- Detachment of the occluding material from the vessel (up to 1 cm/sec).
- Aspiration of the detached material into the catheter head.
- Fragmentation of the aspirated material.
- Transportation out of patient's body.



Rotating atraumatic catheter head with blunt facets modifies and detaches mixed morphology lesions.



Additional luminal gain is achieved by a vortex created around the rotating cylinder. Large side windows further break down and efficiently remove detached material.

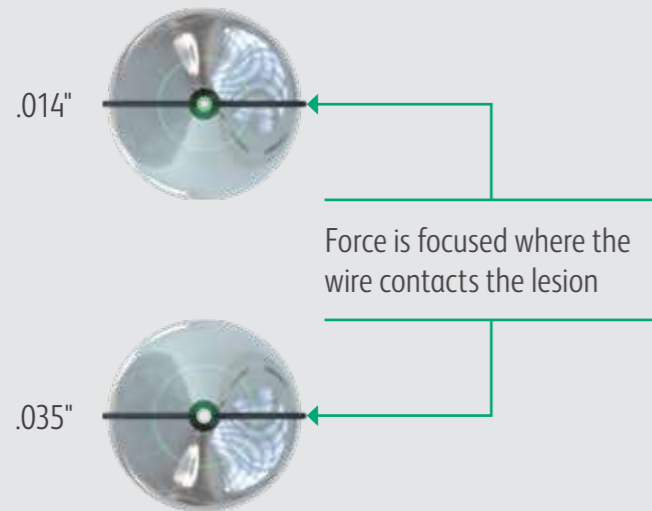


Rotating helix creates continuous negative pressure at tip; actively aspirating and transporting material away.

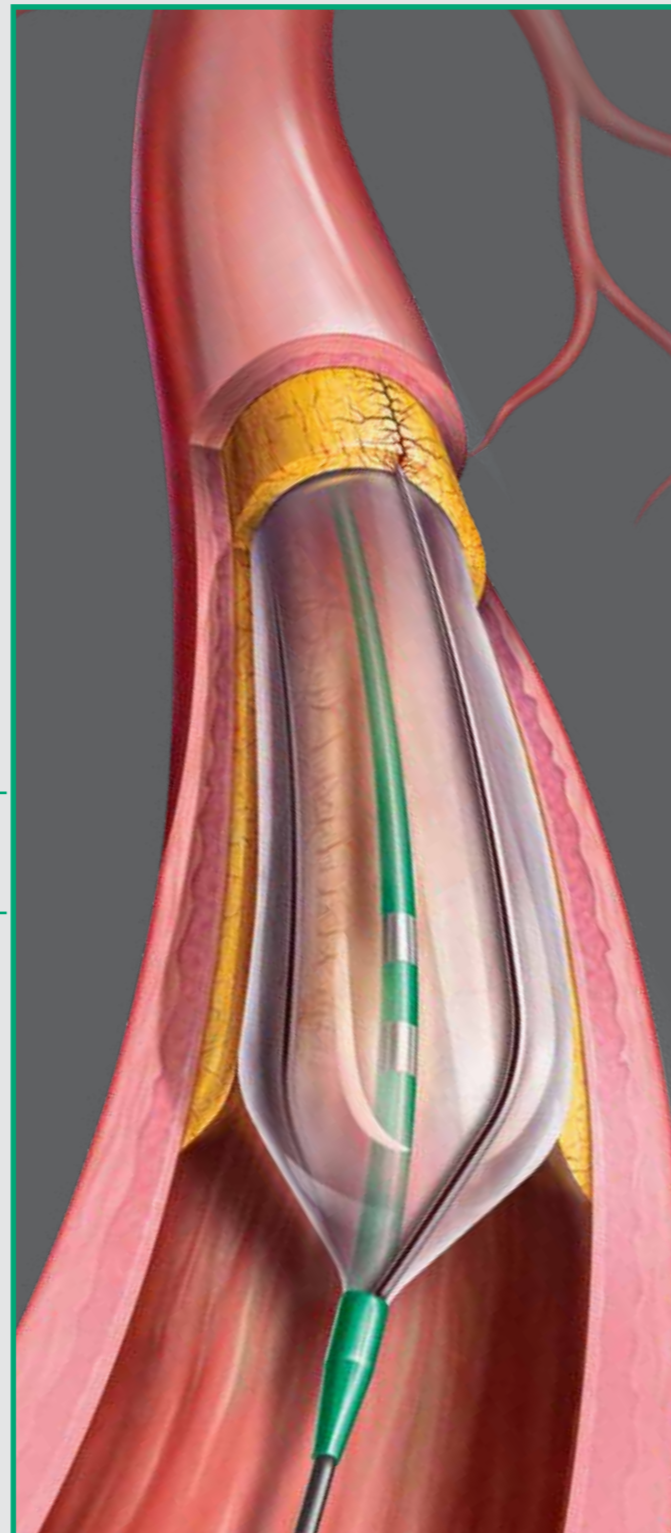
UltraScore™ 014/035

Focused Force PTA Balloon

The UltraScore™ Focused Force PTA Balloon is a scoring balloon designed to provide controlled plaque modification. The UltraScore™ catheter utilizes external, longitudinal wires to provide focused force in order to provide controlled plaque modification.



Provides approximately **24 times more force** than a standard PTA balloon where the wire contacts the lesion*

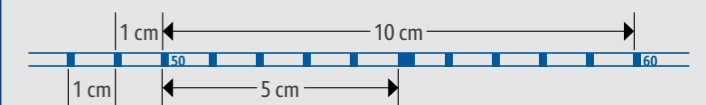


Ultraverse™ 035

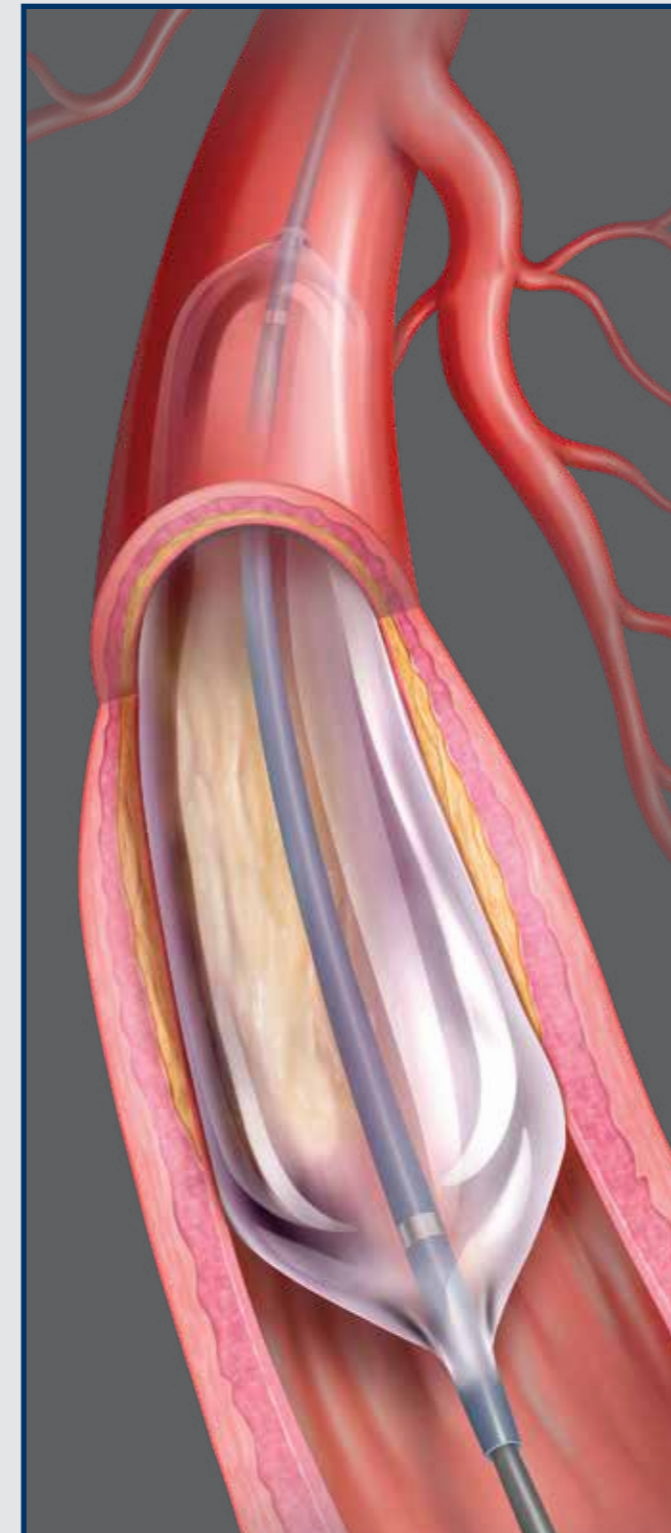
PTA Dilatation Catheter

The Ultraverse™ 035 PTA Dilatation Catheter is a peripheral balloon intended to dilate stenosis in the peripheral arteries. Ultraverse™ 035 Catheters utilize the GeoAlign™ Marking System which is designed to facilitate accurate balloon placement and geographic alignment. During repeat catheter placement, the GeoAlign™ Marking System is designed to increase procedure efficiency and reduce radiation exposure by minimizing fluoroscopy time.¹

The Ultraverse™ 035 Catheter offers a variety of length and diameter options.



AVAILABLE IN LENGTHS UP TO **300 mm**



* Based on theoretical calculation using equation $P=F/A$ comparing UltraScore™ balloon to POBA. Data on file, BD, Tempe, AZ. May not be predictive of clinical performance. Different test methods may yield different results.

* When the catheter is exposed to the vascular system, it should be manipulated while under high-quality fluoroscopy observation.

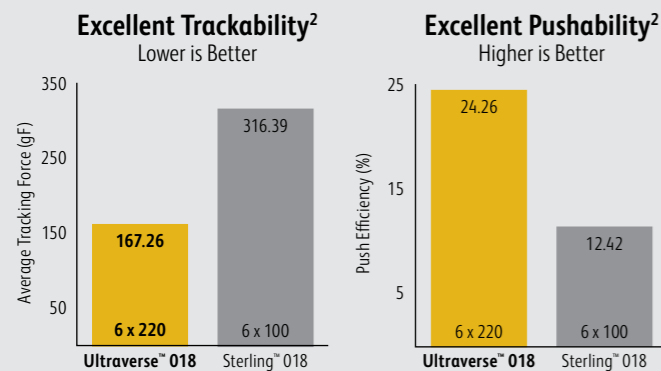
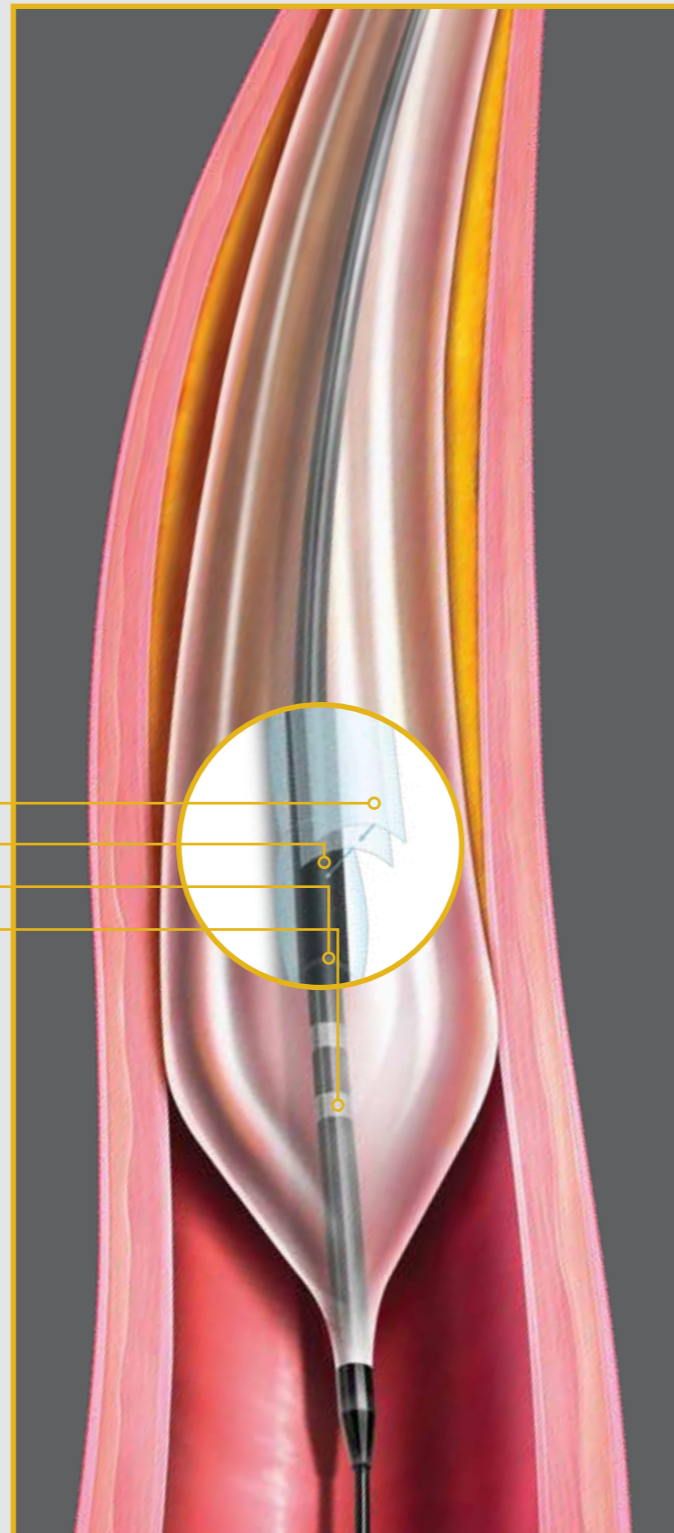
Ultraverse™ 018

PTA Balloon Dilatation Catheter

The Ultraverse™ 018 PTA Balloon Dilatation Catheter is a peripheral balloon designed for navigating through tortuous anatomy below-the-knee. Ultraverse™ 018 Catheters utilize the GeoAlign™ Marking System which is designed to facilitate accurate balloon placement and geographic alignment. During repeated catheter placement, the GeoAlign™ Marking System is designed to increase procedure efficiency and reduce radiation exposure by minimizing fluoroscopy time.¹

The Ultraverse™ 018 Catheter offers versatile sizing options and is designed for flexibility in tortuous anatomy.

- GeoAlign™ Marking System
- Ultra-Cross™ Dual Layer Hydrophilic Coating
- Reinforced Inner Lumen
- Checker™ Flex Points
- Dual Marker Band



The trackability test measures the peak force necessary to track a catheter through a tortuous anatomical model.

The pushability test measures the percent of longitudinal force transferred from the hub to the tip of the catheter in an anatomical model.

¹ When the catheter is exposed to the vascular system, it should be manipulated while under high-quality fluoroscopy observation.
² 6x220 mm Ultraverse™ 018 N=5; 6x100 mm Sterling™ 014 N=5. p<0.05. Data on file. Bench test results may not necessarily be indicative of clinical performance. Different tests may yield different results.

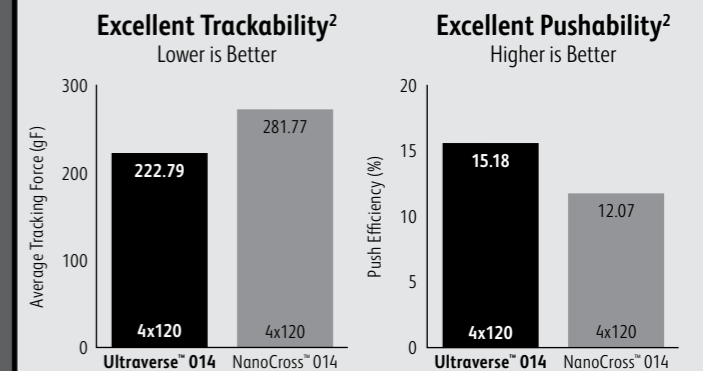
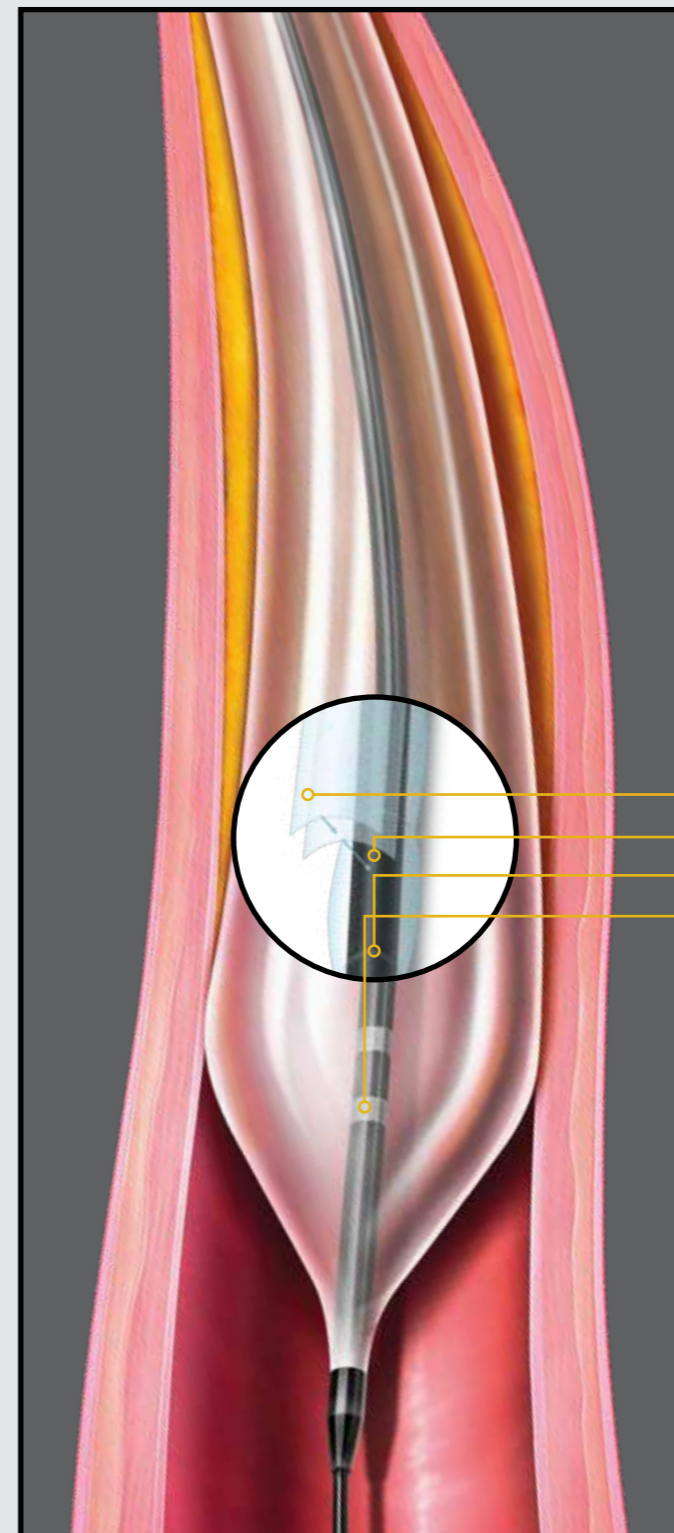
Ultraverse™ 014

PTA Balloon Dilatation Catheter

The Ultraverse™ 014 PTA Balloon Dilatation Catheter is a peripheral balloon designed for navigation through tortuous anatomy below-the-knee. Ultraverse™ 014 Catheters utilize the GeoAlign™ Marking System which is designed to facilitate accurate balloon placement and geographic alignment. During repeat catheter placement, the GeoAlign™ Marking System is designed to increase procedure efficiency and reduce radiation exposure by minimizing fluoroscopy time.¹

The Ultraverse™ 014 Catheter offers versatile sizing options and is designed for flexibility in tortuous anatomy.

- GeoAlign™ Marking System
- Ultra-Cross™ Dual Layer Hydrophilic Coating
- Reinforced Inner Lumen
- Checker™ Flex Points
- Dual Marker Band



The trackability test measures the peak force necessary to track a catheter through a tortuous anatomical model.

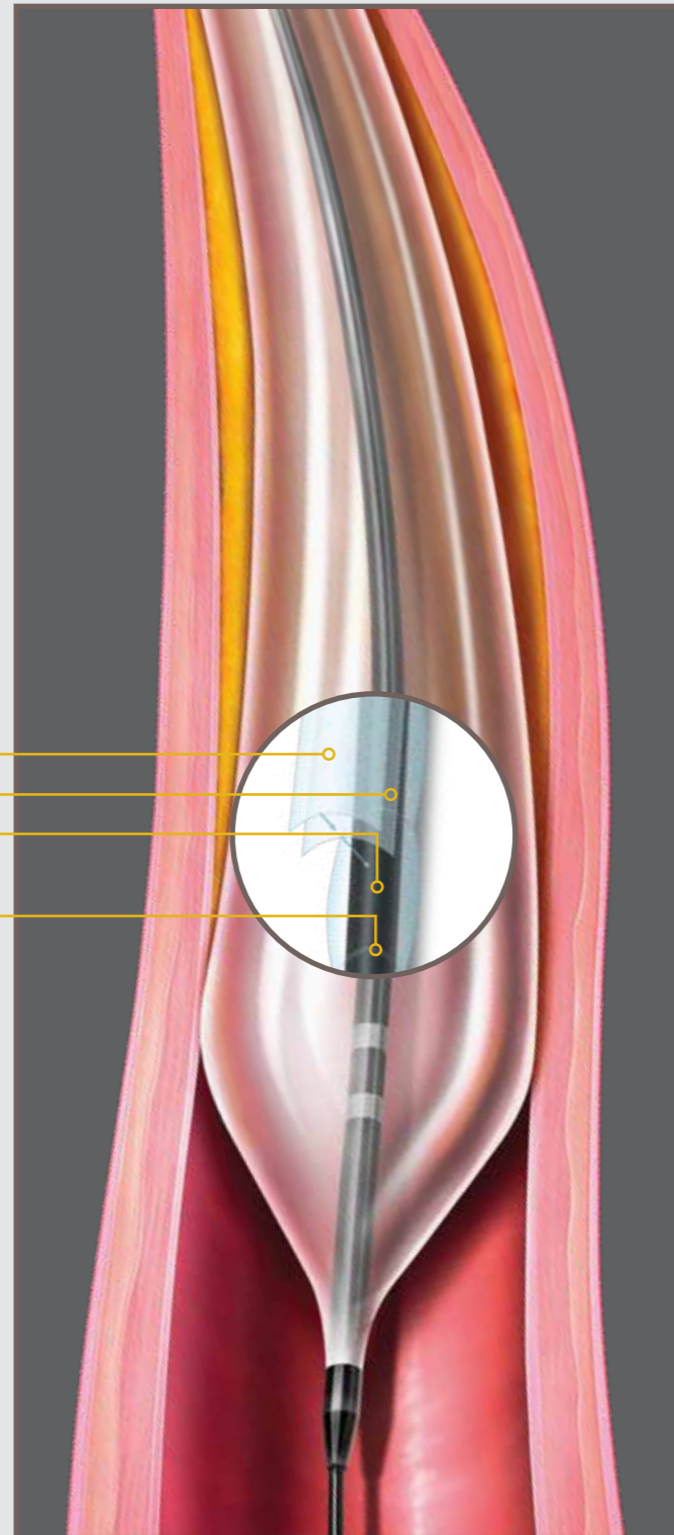
The pushability test measures the percent of longitudinal force transferred from the hub to the tip of the catheter in an anatomical model.

¹ When the catheter is exposed to the vascular system, it should be manipulated while under high-quality fluoroscopy observation.
² 4x120 mm Ultraverse™ 014 N=5; 4x120 mm NanoCross™ 014 N=5. p<0.05. Data on file. Bench test results may not necessarily be indicative of clinical performance. Different tests may yield different results.

Ultraverse™ RX

PTA Dilatation Catheter

The Ultraverse™ RX PTA Dilatation Catheter is a first-line peripheral balloon that offers a wide variety of sizes and has numerous features that enhance trackability.

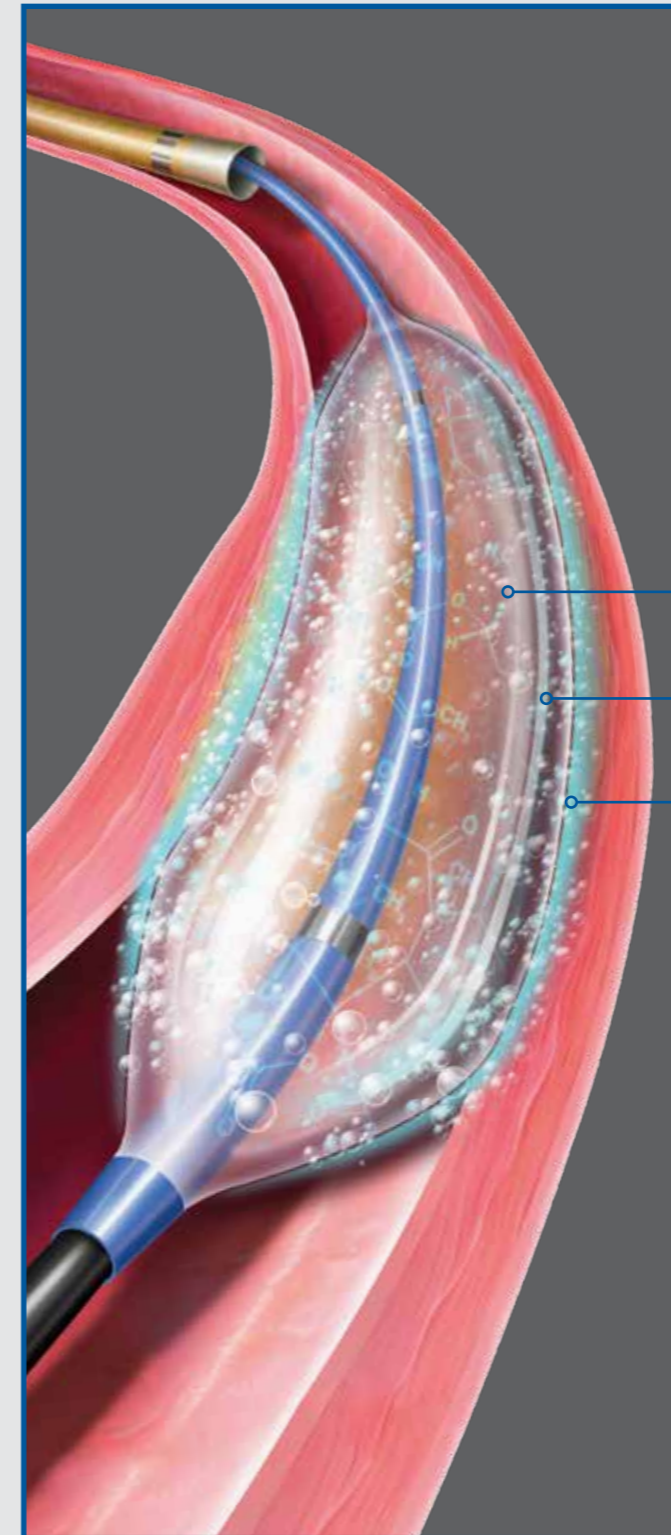


- Ultra-Cross™ Dual Layer Hydrophilic Coating designed to reduce friction
 - Highly lubricious top layer
 - Highly durable bottom layer
- Reinforced Inner Lumen provides improved axial strength constructed to cross tight lesions
- Checker™ Flex Points engineered to allow the balloon to flex in tortuous anatomy

Lutonix™ 035

Drug Coated Balloon PTA Catheter

The Lutonix™ 035 Drug Coated Balloon PTA Dilatation Catheter is a first-line treatment option for de novo or restenotic lesions in the SFA. The Lutonix™ 035 DCB combines the benefits of a mechanical dilatation with the anti-restenotic effects of paclitaxel, which demonstrated primary patency rates superior to PTA at 12 months.¹ The Lutonix™ 035 DCB has been shown to be safe and effective in an IDE trial, global registry, and an independent analysis.²



DRUG

Lutonix™ 035 DCB drug dose of paclitaxel is 2 µg/mm²

CARRIER

Polysorbate and Sorbitol

COATING

Facilitates drug retention during preparation and transit and release of a therapeutic dose at the treatment site

The Lutonix™ 035 DCB has a consistent coating resulting in 360° paclitaxel treatment at the target vessel³ with no metal left behind.

Lutonix BTK IDE Clinical Data on File. Primary Efficacy is defined as freedom from composite of above-ankle amputation, target lesion occlusion, and clinically-driven target lesion revascularization. As 6 months, treatment with LUTONIX® 014 DCB resulted in a primary efficacy rate of 73.7% (196/266) versus 63.5% with PTA alone (87/137).

The primary effectiveness analysis for superiority of DCB vs. PTA was not met with a p-value of 0.0273. At 30 days, treatment with LUTONIX® 014 DCB resulted in a freedom from primary safety event rate of 99.3% (283/285) versus 99.4% (154/155) for PTA alone. Primary Safety is defined as freedom from composite of all-cause death, above-ankle (index) amputation or major reintervention (new bypass graft, jump/interposition graft revision, or thrombectomy/ thrombolysis) of the index limb involving a below-the-knee. The primary safety analysis for non-inferiority for DCB vs.

PTA was met with a p-value of <0.001. Percentages reported are derived from Kaplan-Meier analyses.

The Lutonix™ 035 Drug Coated Balloon has not been clinically studied in combination with Crosser™ CTO Recanalization Catheter, Seeker™ Crossing Support Catheter, UltraScore™ Focused Force PTA Balloon, or LifeStent™ Vascular Stent System

¹ LEVANT 2 clinical trial data on file. N=476. At 12 months, treatment with Lutonix™ 035 resulted in a primary patency rate of 73.5% versus 56.8% with PTA alone (p=0.001). Primary patency defined as absence of binary restenosis defined by DUS PSVR >2.5 and freedom from Target Lesion Revascularization (TLR). At 12 months, treatment with Lutonix™ 035 resulted in a freedom from primary safety event rate of 86.7% versus 81.5% with PTA alone. Primary safety defined as composite of freedom from all-cause Perioperative death and freedom at 1 year in the index limb from Amputation (ATK or BTK), Reintervention, and Index-limb related death. Percentages reported are derived from Kaplan-Meier analyses (not pre-specified).

² Analysis conducted by an independent clinical research organization, Syntactx LLC for which it was compensated by BD. 173 deaths in LEVANT 1 and LEVANT 2 (including patients from Continued Access arm of LEVANT 2), with 151 occurring in Lutonix™ 035 DCB patients (14.0%) and 22 in PTA patients (10.4%). Data on file. Bard Peripheral Vascular, Inc. Tempe, AZ. Device studied was Lutonix™ 035 Drug Coated Balloon PTA Catheter.

³ Virmani preclinical animal data on file. Animal test results may not be indicative of clinical performance. Different test methods may yield different results.

Lutonix™ 018

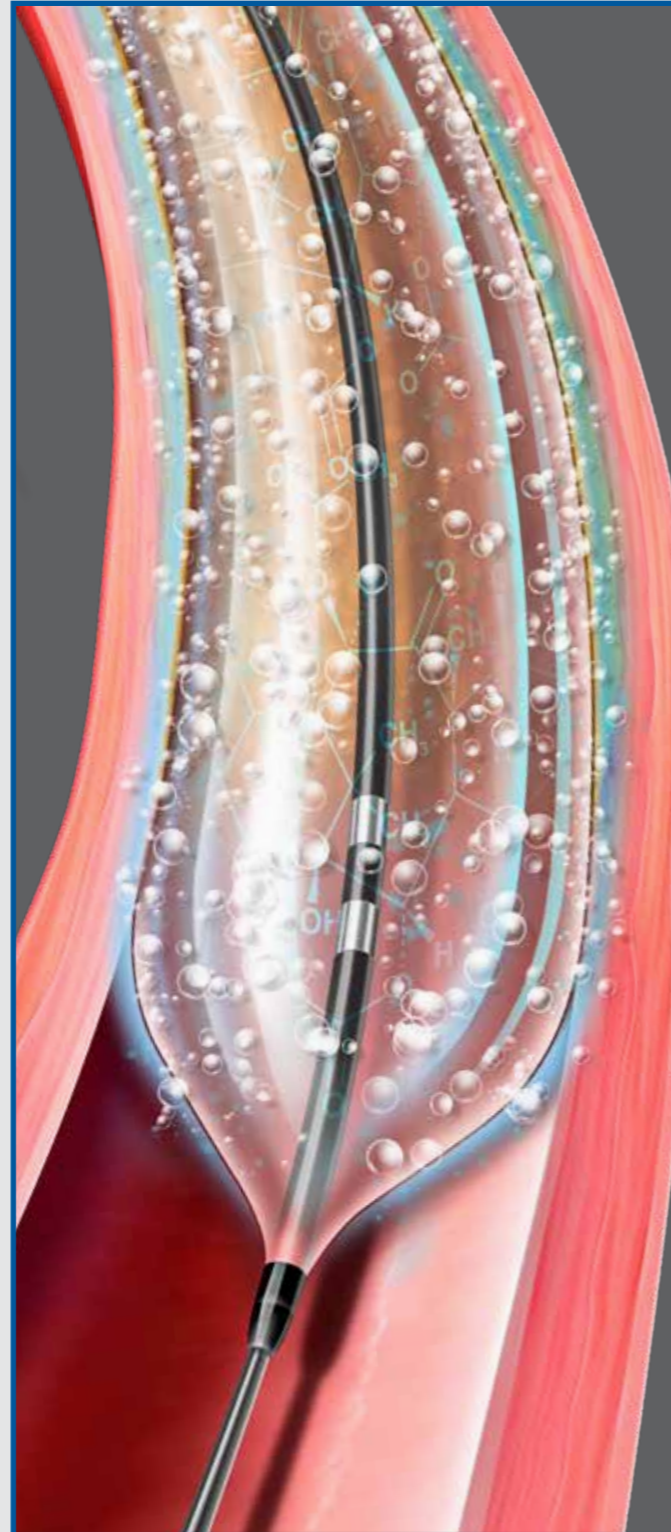
Drug Coated Balloon PTA Catheter

The Lutonix™ 018 DCB utilizes the same proven drug coating formulation as the Lutonix™ 035 DCB, which demonstrated outstanding 24 month freedom from TLR in the following patient groups¹:

- ISR Subgroup: 84.6%
- Long Lesion Subgroup: 88.2%
- All Patients: 90.3%

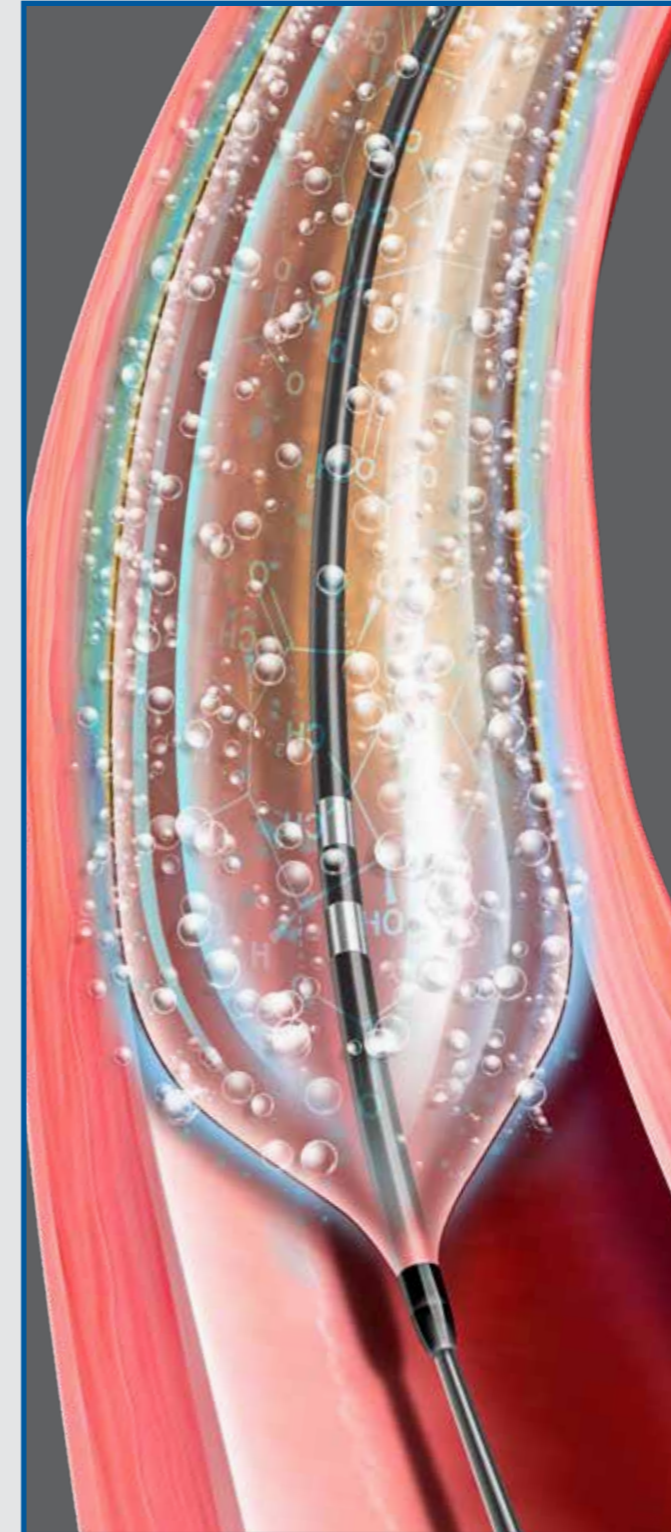
With a crossing profile 20% lower than the lowest profile Lutonix™ 035 DCB², the Lutonix™ 018 DCB was built to:

- Cross tight lesions
- Navigate tortuous anatomy
- Reliably deliver drug to complex lesions



Lutonix™ 014

Drug Coated Balloon PTA Catheter



The LUTONIX™ 014 DCB demonstrated non-inferior safety and 21.4% improved primary patency over PTA* in a rigorous Level 1, Randomized Clinical Trial.

The LUTONIX™ 014 DCB provides excellent pushability and trackability.

Our low 4F portfolio allows for small entry profile and alternative access sites.

The Lutonix™ 014 product line features:

- All 4F sheath compatibility
- Dual distal marker bands
- GEOALIGN™ Marking System.

¹ Primary efficacy endpoint is defined as freedom from TLR at 12 months. Total of 648 subjects were evaluable for the primary efficacy endpoint analysis. The 12 month TLR Free rate by subject counts at 12 months was 93.4%. The Kaplan-Meier estimates TLR-Free survival was 94.1% at 12 months and 90.3% at 24 months. TLR-Free survival by lesion location was 94.7% (n=483) for SFA, 92.9% (n=86) for popliteal, and 92.3% (n=121) for patients with lesions in both SFA and popliteal. Data on file, Bard Peripheral Vascular, Inc.

² Data on file. BD, Tempe, AZ. 4x220 mm Lutonix™ 035 DCB N = 25, 4 x 220 Lutonix™ 018 DCB N = 30. Bench test results may not necessarily be indicative of clinical performance. Different tests may yield different results.

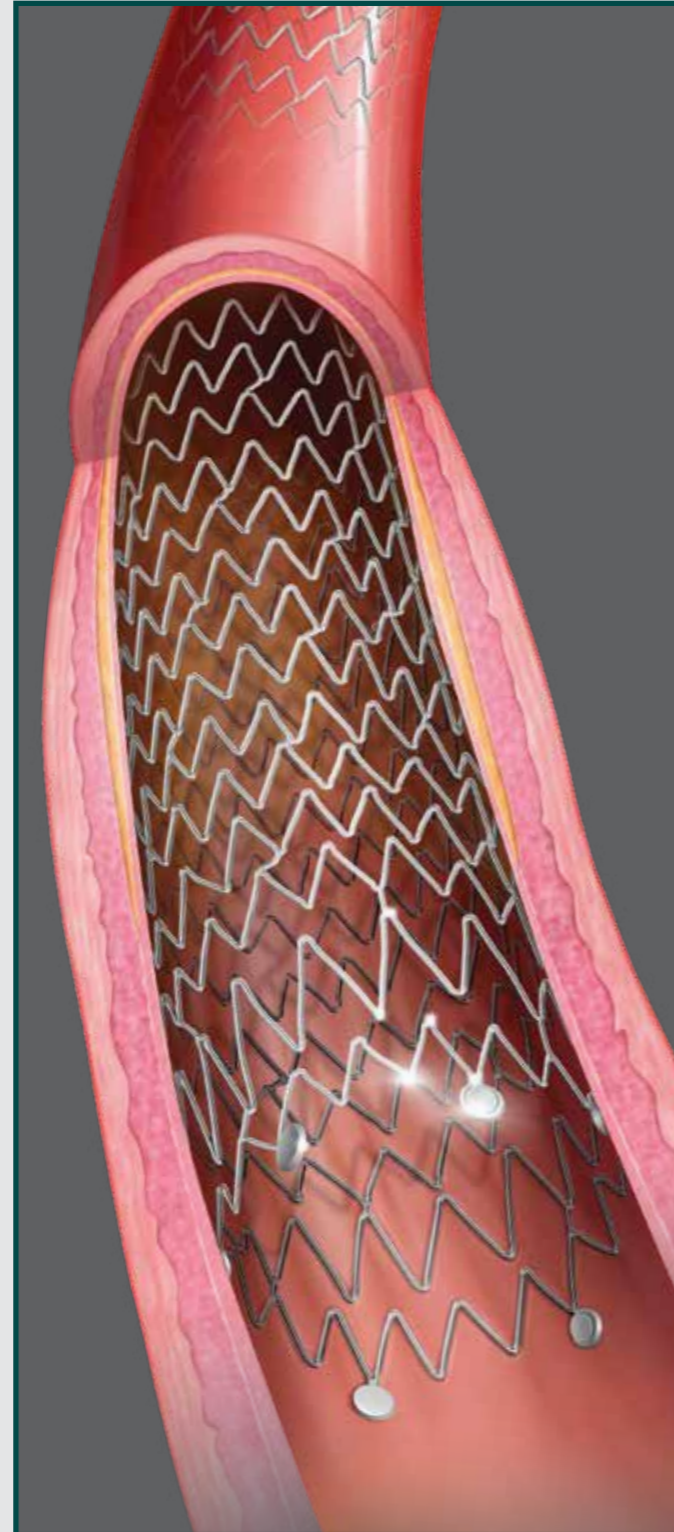
Lutonix BTK IDE Clinical Data on File. Primary Efficacy is defined as freedom from composite of above-ankle amputation, target lesion occlusion, and clinically-driven target lesion revascularization. As 6 months, treatment with LUTONIX® 014 DCB resulted in a primary efficacy rate of 73.7% (196/266) versus 63.5% with PTA alone (87/137).

The primary effectiveness analysis for superiority of DCB vs. PTA was not met with a p-value of 0.0273. At 30 days, treatment with LUTONIX® 014 DCB resulted in a freedom from primary safety event rate of 99.3% (283/285) versus 99.4% (154/155) for PTA alone. Primary Safety is defined as freedom from composite of all-cause death, above-ankle (index) amputation or major reintervention (new bypass graft, jump/interposition graft revision, or thrombectomy/thrombolysis) of the index limb involving a below-the-knee. The primary safety analysis for non-inferiority for DCB vs PTA was met with a p-value of <0.001. Percentages reported are derived from Kaplan-Meier analyses

LifeStent™ 5F

Vascular Stent System

The LifeStent™ Vascular Stent System is a peripheral stent designed to improve luminal diameter in the treatment of symptomatic de novo or restenotic lesions up to 240 mm in length in the native superficial femoral artery (SFA) and popliteal artery with reference diameters ranging from 4.0-6.5 mm. The LifeStent™ Vascular Stent is comprised of a self-expanding, nitinol stent with a unique helical design, engineered for bending, compression, and torsion with dynamic vessel conformability. The LifeStent™ 5F Vascular Stent has a 1F lower profile than the legacy LifeStent™ Vascular Stent System on a low profile, 5F delivery system. The LifeStent™ Vascular Stent System is the only stent design that is FDA-approved for the SFA and full popliteal artery.*



LifeStent™
Vascular Stent System

LifeStent™ 5F
Vascular Stent System

LifeStent™ XL
Vascular Stent System

LifeStent™ Solo™
Vascular Stent System

* As of February 2021 on the U.S. Market
This product has not been clinically studied in combination with Lutonix™, Crosser™, Seeker™, UltraScore™, Ultraverse™, or LifeStream™

E-Luminexx™

Vascular Stent



E-LUMINEXX™ Vascular Stent is a self-expanding, flexible, nitinol (nickel-titanium alloy) stent that expands to its preset diameter upon exposure to body temperature, and is indicated for:

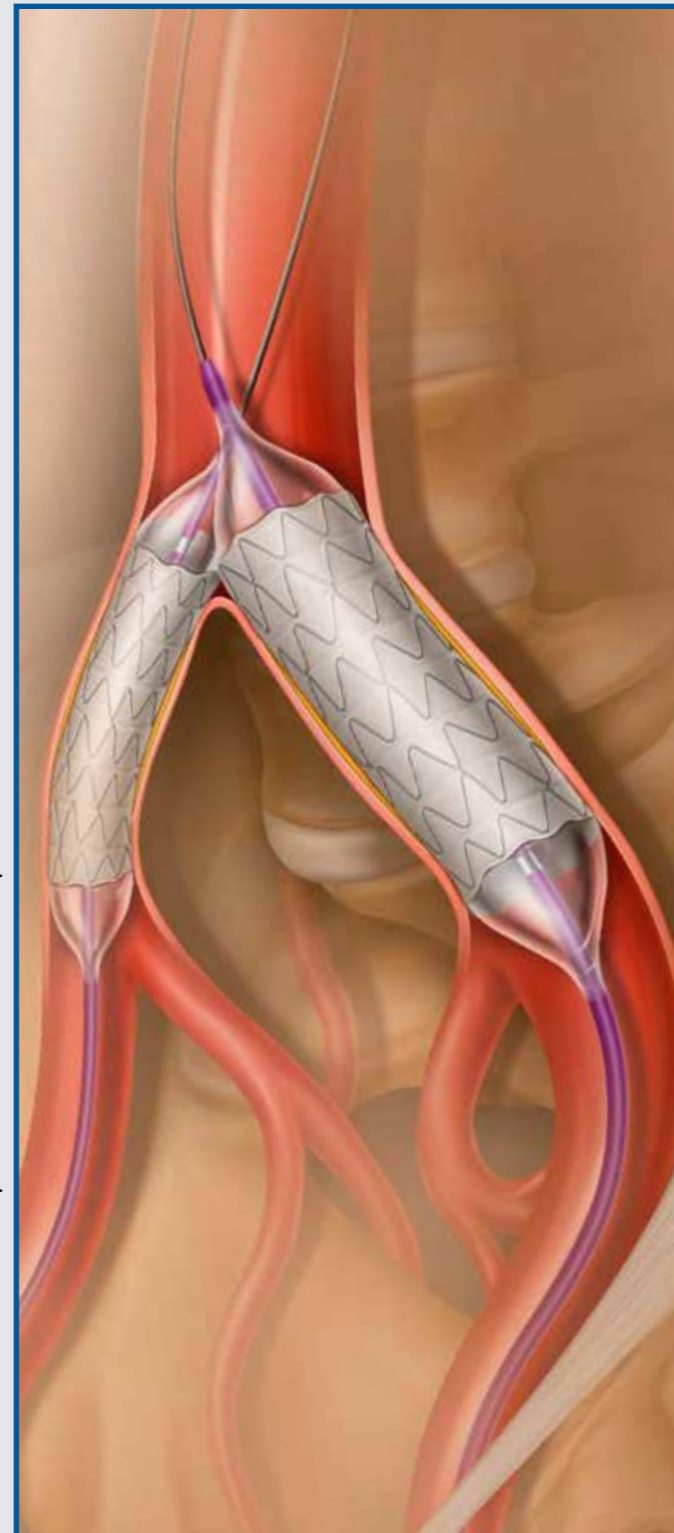
- o Residual stenoses with impaired perfusion (pressure gradient) following balloon dilatation, especially in stages III and IV according to Fontaine
- o Dissection
- o Detached arteriosclerotic plaque material and luminal obstruction following balloon dilatation
- o Occlusion after thrombolysis or after aspiration and before dilatation
- o Restenosis or reocclusion
- It is designed for exceptional visibility under fluoroscopy, which significantly enhances stent placement accuracy
- The proprietary interlocking Puzzle™ Tantalum marker assures permanent attachment
- The dimensional design changes facilitate harmonization of radial force across the range of product diameters
- It has an open cell, flexible mesh design with minimal length change during deployment
- The 2 mm flared stent ends are designed to resist migration and compensate for lumen tapering

LifeStream™

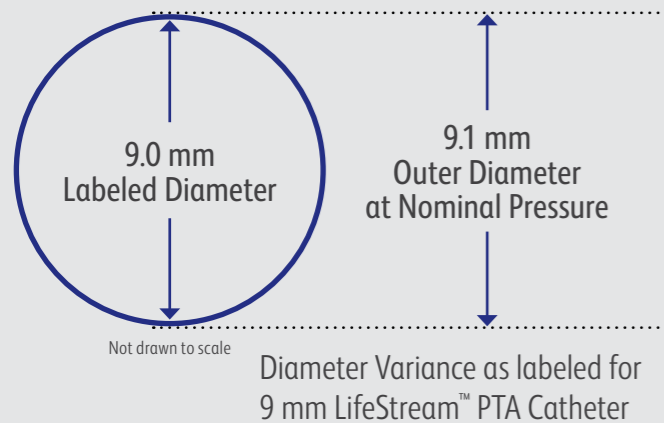
Balloon Expandable Vascular Covered Stent

The LifeStream™ Balloon Expandable Vascular Covered Stent was developed using BD's vast experience in PTA and covered stents to create a device designed for the challenging anatomy of iliac arteries and engineered to facilitate accurate placement. With a design that facilitates ease of trackability, low sheath profile, stent-specific marker bands, and minimal foreshortening, the LifeStream™ Covered Stent helps you deliver accurate performance.

Utilizing non-compliant balloon technology, the LifeStream™ Covered Stent is designed to provide precise diameters and efface heavily calcified iliac lesions.



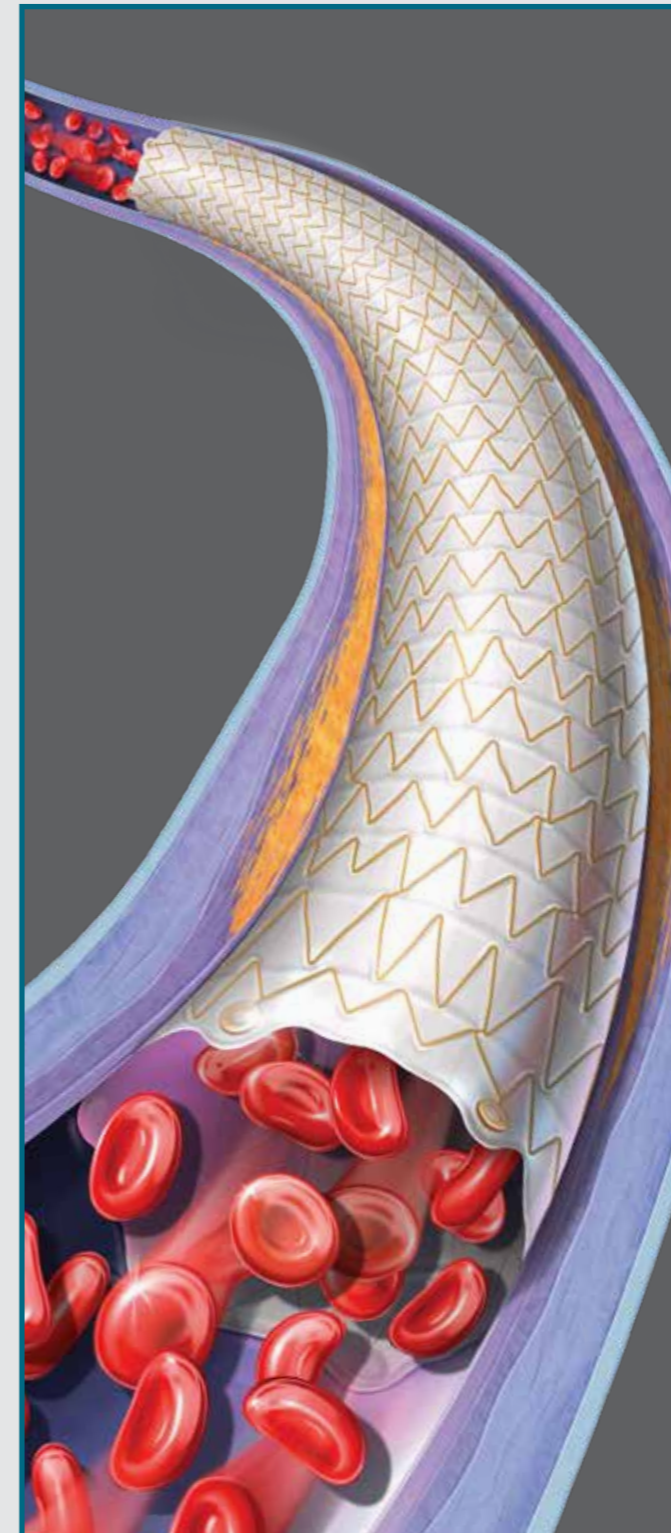
Average Compliance 1.1% at Nominal Pressure Across All Sizes¹



¹ Calculated as the percentage difference between the labeled balloon outer diameter and the actual balloon outer diameter at nominal pressure (NP). Across all balloon sizes, compliance ranged from 0% to 2.4%, with a mean of 1.1% at nominal pressure. Please consult package insert for the LifeStream™ Covered Stent compliance chart.

Covera™ Plus

Vascular Covered Stent



COVERA™ Plus Vascular Covered Stent Straight covered stent design is indicated for the treatment of stenosis in uniform outflow veins of hemodialysis patients as well as in atherosclerotic lesions in iliac and femoral arteries.

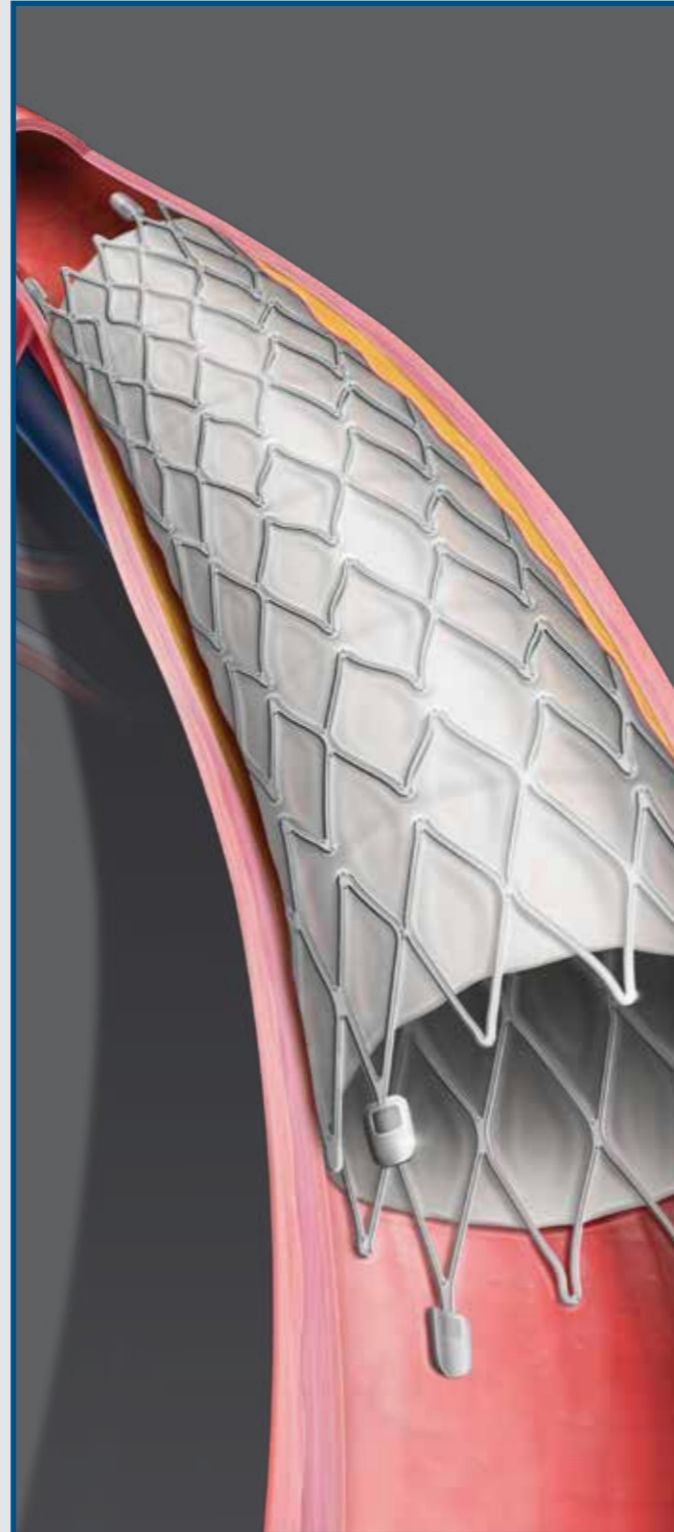
Covera™ Plus Vascular Covered Stent:

- Has a proprietary dual layer ePTFE encapsulation with Carbon impregnation on the luminal surface
- Is highly flexible and fracture resistant base stent architecture is designed for tortuous anatomical segments like the cephalic arch and the SFA
- Has a triaxial delivery system with two speed options, in combination with minimal implant foreshortening during deployment
- Has radiopaque Tantalum markers at the covered stent ends that contribute to placement control and accuracy

Fluency™ Plus

Endovascular Stent Graft

The Fluency™ Plus Vascular Stent Graft is a self-expanding Nitinol skeleton encapsulated within two ultra-thin layers of ePTFE, with Carbon impregnated luminal surface, highly radiopaque PUZZLE™ Tantalum markers provide superior fluoroscopic visualization throughout the entire stent graft placement. Indicated for: .



- Residual stenosis with impaired perfusion (pressure gradient) following balloon dilatation, especially in stages III and IV according to Fontaine
- Dissection
- Detached arteriosclerotic plaque material and luminal obstruction following balloon dilatation
- Occlusion after thrombolysis or after aspiration and before dilatation
- Restenosis or reocclusion

PTA and DCB solutions Quick Reference Guide

| Product | Diameter (mm) | Length (mm) | RBP (atm) | Sheath (F) | Shaft (cm) | Material | Category |
|--------------------------|---------------|-------------|-----------|------------|--------------|-------------|--------------------|
| Lutonix™ 035 Catheter | 4 - 12 | 40 - 150 | 12 | 5 | 75, 100, 130 | Drug Coated | .035" Drug Coated |
| Lutonix™ 018 Catheter | 4 - 7 | 40 - 220 | up to 12 | 4 - 5 | 100, 130 | Drug Coated | .018" Drug Coated |
| Lutonix™ 014 Catheter | 2 - 4 | 40 - 150 | up to 15 | 4 | 150 | Drug Coated | .014" Drug Coated |
| UltraScore™ 035 Catheter | 4 - 8 | 20 - 300 | up to 14 | 5 - 6 | 130 | Nylon | .035" Specialty |
| UltraScore™ 014 Catheter | 2 - 7 | 20 - 300 | up to 14 | 4 - 5 | 150 | Nylon | .014" Specialty |
| Ultraverse™ 035 Catheter | 3 - 12 | 20 - 300 | up to 21 | 5 - 7 | 75, 130 | Nylon | .035" Standard |
| Ultraverse™ 018 Catheter | 2 - 9 | 20 - 300 | up to 16 | 4 - 6 | 75, 130, 150 | Nylon | .018" Small Vessel |
| Ultraverse™ 014 Catheter | 1.5 - 5 | 20 - 300 | up to 16 | 4 - 5 | 150 | Nylon | .014" Small Vessel |
| Ultraverse™ RX Catheter | 1.25 - 7 | 15 - 300 | up to 16 | 4 - 5 | 150, 200 | Nylon | .014" Small Vessel |

Crossing Catheter solutions Quick Reference Guide

| Product | Sheath Size (F) | Shaft Length (cm) | Guidewire (inch) |
|---------------------------|-----------------|-------------------|------------------|
| Seeker™ Crossing Catheter | 4F | 135, 150 | 0.014 |
| Seeker™ Crossing Catheter | 4F | 90, 135, 150 | 0.018 |
| Seeker™ Crossing Catheter | 5F | 65, 90, 135, 150 | 0.035 |

| Product | Sheath Size (F) | Shaft Length (cm) | Platform | Guidewire (inch) |
|------------------------------------|-----------------|-------------------|---------------|------------------|
| Crosser™ Catheter S6 | 5F | 106, 154 | No wire | |
| Crosser™ Catheter Catheter 14S RX | 5F | 106, 146 | Raid Exchange | 0.014 |
| Crosser™ Catheter Catheter 14S OTW | 5F | 106, 146 | Over-The-Wire | 0.034 |

Thin-walled sheath solutions Quick Reference Guide

| Product | Sheath Size (F) | Shaft Length (cm) | Guidewire (inch) | Design | Tip | Radiopaque Marker |
|-----------|-----------------|--------------------|------------------|-------------------------|----------|-------------------|
| Halo One™ | 4, 5 | 10, 25, 45, 70, 90 | 0.018", 0.035 | Stainless Steel Braided | Straight | Yes |
| Halo One™ | 4, 5 | 10, 25, 45, 70, 90 | 0.018", 0.035 | Stainless Steel Braided | Straight | Yes |
| Halo One™ | 6 | 10, 25 | 0.035 | Stainless Steel Braided | Straight | Yes |

*Halo One™ on 0.018 Guidewire is available only for 10 cm length

Atherothrombectomy solutions Quick Reference Guide

| Product | Diameter (mm) | Catheter Type | Shaft Length | Max. Rotational Speed | Max. Aspiration Rate |
|---------------|---------------|---------------|--------------|-----------------------|----------------------|
| Rotarex™S 6F | 3 - 5 | 0.018" / OTW | 110, 135 | 60,000 RPM | 45ml /min |
| Rotarex™S 8F | 5 - 8 | 0.018" / OTW | 85, 110 | 40,000 RPM | 75ml /min |
| Rotarex™S 10F | 7 - 12 | 0.025" / OTW | 85 | 40,000 RPM | 130ml /min |

Stenting solutions Quick Reference Guide Stents

| Product | Catheter Length | Stent Diameter (mm) | Stent Length (mm) | Recommended Introducer | Material | Recommended Guidewire |
|---|-----------------|-----------------------------|--|------------------------|----------|-----------------------|
| LifeStent™ Vascular Stent System | 80 - 130 | 5, 6, 7, 8, 9, 10 | 20, 30, 40, 60, 80, 100, 120, 150, 170 | 6F | Nitinol | 0.035" |
| LifeStent™XL Self Expanding Vascular Stent System | 80 - 130 | 5, 6, 7, 6 | 100, 120, 150, 170 | 6F | Nitinol | 0.035" |
| LifeStent™ Solo™ Vascular Stent System | 80 - 135 | 6, 7 | 200 | 6F | Nitinol | 0.035" |
| LifeStent™ 5F Vascular Stent System | 80 - 135 | 5, 6, 7 | 20, 30, 40, 60, 80, 100, 120, 150, 170 | 5F | Nitinol | 0.014" - 0.035" |
| E-Luminex™ Vascular Stent | 80 - 135 | 7, 8, 9, 10 | 20, 30, 40, 60, 100 | 6F | Nitinol | 0.035" |
| Fluency Plus™ | 80, 117 | 5, 6, 7, 8, 9, 10, 12, 13.5 | 20, 30, 40, 60, 80, 100, 120 | 8F, 9F, 10F | ePTFE | 0.035" |

| Product | Shaf Length | Expanded Covered Stent Diameter (mm) | Compressed Covered Stent Length (mm) | Rated Burst Pressure (atm) | Recommended Introducer | Material | Recommended Guidewire |
|--------------------------------------|-------------|--------------------------------------|--------------------------------------|----------------------------|------------------------|--|-----------------------|
| Lifestream™ Balloon Expandible Stent | 80 - 135 | 5, 6, 7, 6, 7, 8, 9, 10, 12 | 16 - 58 | 12 | 6F, 7F, 8F | 3616L steel, stainless steel and ePTFE | 0.035" |
| Covera™ Plus Vascular Covered Stent | 80 - 120 | 6, 7, 8, 9, 10 | 30 - 100 | 8F - 9F | ePTFE | 0.035" | Straight/Flared |

Halo One™ Thin-Walled Guiding Sheath

| Order code | Shaft length (cm) | Guide wire (inch) | Sheath Size (F) |
|-------------|-------------------|-------------------|-----------------|
| HLO41018FH* | 10 | 0.018 | 4 |
| HLO41035F* | 10 | 0.035 | 4 |
| HLO41035FH* | 10 | 0.035 | 4 |
| HLO42535 | 25 | 0.035 | 4 |
| HLO42535FH | 25 | 0.035 | 4 |
| HLO44535 | 45 | 0.035 | 4 |
| HLO47035 | 70 | 0.035 | 4 |
| HLO49035 | 90 | 0.035 | 4 |
| HLO51018FH* | 10 | 0.018 | 5 |
| HLO51035FH* | 10 | 0.035 | 5 |
| HLO51035F* | 10 | 0.035 | 5 |
| HLO52535 | 25 | 0.035 | 5 |
| HLO52535H | 25 | 0.035 | 5 |
| HLO54535 | 45 | 0.035 | 5 |
| HLO57035 | 70 | 0.035 | 5 |
| HLO59035 | 90 | 0.035 | 5 |
| HLO61035F* | 10 | 0.035 | 6 |
| HLO61035FH* | 10 | 0.035 | 6 |
| HLO62535 | 25 | 0.035 | 6 |
| HLO62535H | 25 | 0.035 | 6 |

Units per case 1 *Units per case 5

The Crosser™ Catheter

| Order code | Type | Tip configuration | Length (cm) | Sheath size (F) |
|------------|---------|-------------------|-------------|-----------------|
| CRES106 | RX | Support-taper | 106 | 5 |
| CRE14S | RX | Support-taper | 146 | 5 |
| CRES6* | no wire | - | - | 5 |
| CRES6106 | no wire | - | 106 | - |

0.014" guidewire compatible Units per case: 1

| Order code | Description |
|------------|--------------------|
| GEN200 | Crosser™ Generator |
| INJ100 | Flowmate™ Injector |

SEEKER™ Crossing Support Catheters (5/box)

| Order code | Length (cm) | Guidewire |
|------------|-------------|-----------|
| SK13514 | 135 | .014" |
| SK15014 | 150 | |
| SK9018 | 90 | .018" |
| SK13518 | 135 | |
| SK15018 | 150 | .035" |
| SK6535M | 65 | |
| SK9035M | 90 | |
| SK13535M | 135 | |
| SK15035M | 150 | |

Units per case: 5

Rotarex™S: Rotational Atherothrombectomy Catheter

| Order code | Length (cm) | Sheath Size (F) |
|------------|-------------|-----------------|
| 80219 | 110 | 6 |
| 80202 | 135 | 6 |
| 80223 | 85 | 8 |
| 80224 | 110 | 8 |
| 80277 | 85 | 10 |

UltraScore™ 035 Focused Force PTA Balloon

| 130 cm Shaft Length | | | | | |
|---------------------|-----------------------|---------------------|----------------------------|-----------------|---|
| Order code | Balloon Diameter (mm) | Balloon Length (mm) | Rated Burst Pressure (atm) | Sheath Size (F) | |
| US3513042 | 4 | 20 | 14 | 5 | |
| US3513044 | | 40 | 14 | 5 | |
| US3513048 | | 80 | 14 | 5 | |
| US35130410 | | 100 | 14 | 5 | |
| US35130412 | | 120 | 14 | 5 | |
| US35130415 | | 150 | 14 | 5 | |
| US35130420 | | 200 | 14 | 5 | |
| US35130430 | | 300 | 14 | 5 | |
| US3513052 | | 5 | 20 | 14 | 5 |
| US3513054 | | | 40 | 14 | 5 |
| US3513058 | 80 | | 14 | 5 | |
| US35130510 | 100 | | 14 | 5 | |
| US35130512 | 120 | | 14 | 5 | |
| US35130515 | 150 | | 14 | 5 | |
| US35130520 | 200 | | 14 | 6 | |
| US35130530 | 300 | | 14 | 6 | |
| US3513062 | 6 | | 20 | 14 | 5 |
| US3513064 | | | 40 | 14 | 5 |
| US3513068 | | 80 | 14 | 6 | |
| US35130610 | | 100 | 14 | 6 | |
| US35130612 | | 120 | 14 | 6 | |
| US35130615 | | 150 | 14 | 6 | |
| US35130620 | | 200 | 14 | 6 | |
| US35130630 | | 300 | 14 | 6 | |
| US3513072 | | 7 | 20 | 10 | 6 |
| US3513074 | | | 40 | 10 | 6 |
| US3513078 | 80 | | 10 | 6 | |
| US35130710 | 100 | | 10 | 6 | |
| US35130712 | 120 | | 10 | 6 | |
| US35130715 | 150 | | 10 | 6 | |
| US35130720 | 200 | | 10 | 6 | |
| US35130730 | 300 | | 10 | 6 | |

0.035" guidewire compatible

Continued...

UltraScore™ 035 Focused Force PTA Balloon

| 130 cm Shaft Length | | | | |
|---------------------|-----------------------|---------------------|----------------------------|-----------------|
| Order code | Balloon Diameter (mm) | Balloon Length (mm) | Rated Burst Pressure (atm) | Sheath Size (F) |
| US3513082 | 8 | 20 | 10 | 6 |
| US3513084 | | 40 | 10 | 6 |
| US3513088 | | 80 | 10 | 6 |
| US35130810 | | 100 | 10 | 6 |
| US35130812 | | 120 | 10 | 6 |
| US35130815 | | 150 | 10 | 6 |
| US35130820 | | 200 | 10 | 6 |

0.035" guidewire compatible

UltraScore™ 014 Focused Force PTA Balloon

| 150 cm Shaft Length | | | | | |
|---------------------|-----------------------|---------------------|----------------------------|-----------------|---|
| Order code | Balloon Diameter (mm) | Balloon Length (mm) | Rated Burst Pressure (atm) | Sheath Size (F) | |
| US1415022 | 2 | 20 | 14 | 4 | |
| US1415024 | | 40 | 14 | 4 | |
| US1415028 | | 80 | 14 | 4 | |
| US14150210 | | 100 | 14 | 4 | |
| US14150212 | | 120 | 14 | 4 | |
| US14150215 | | 150 | 14 | 4 | |
| US14150220 | | 200 | 14 | 4 | |
| US14150230 | | 300 | 14 | 4 | |
| US141502H2 | | 2.5 | 20 | 14 | 4 |
| US141502H4 | | | 40 | 14 | 4 |
| US141502H8 | 80 | | 14 | 4 | |
| US141502H10 | 100 | | 14 | 4 | |
| US141502H12 | 120 | | 14 | 4 | |
| US141502H15 | 150 | | 14 | 4 | |
| US141502H20 | 200 | | 14 | 4 | |
| US141502H30 | 300 | | 14 | 4 | |
| US1415032 | 3 | | 20 | 14 | 4 |
| US1415034 | | | 40 | 14 | 4 |
| US1415038 | | 80 | 14 | 4 | |
| US14150310 | | 100 | 14 | 4 | |
| US14150312 | | 120 | 14 | 4 | |
| US14150315 | | 150 | 14 | 4 | |
| US14150320 | | 200 | 14 | 4 | |
| US14150330 | | 300 | 14 | 4 | |

0.014" guidewire compatible

Continued...

UltraScore™ 014 Focused Force PTA Balloon

| 150 cm Shaft Length | | | | | |
|---------------------|-----------------------|---------------------|----------------------------|-----------------|---|
| Order code | Balloon Diameter (mm) | Balloon Length (mm) | Rated Burst Pressure (atm) | Sheath Size (F) | |
| US141503H2 | 3.5 | 20 | 14 | 4 | |
| US141503H4 | | 40 | 14 | 4 | |
| US141503H8 | | 80 | 14 | 4 | |
| US141503H10 | | 100 | 14 | 4 | |
| US141503H12 | | 120 | 14 | 4 | |
| US141503H15 | | 150 | 14 | 4 | |
| US141503H20 | | 200 | 14 | 4 | |
| US141503H30 | | 300 | 14 | 4 | |
| US1415042 | | 4 | 20 | 14 | 5 |
| US1415044 | | | 40 | 14 | 5 |
| US1415048 | 80 | | 14 | 5 | |
| US14150410 | 100 | | 14 | 5 | |
| US14150420 | 120 | | 14 | 5 | |
| US14150415 | 150 | | 14 | 5 | |
| US14150420 | 200 | | 14 | 5 | |
| US1415030 | 300 | | 14 | 5 | |
| US1415052 | 5 | | 20 | 12 | 5 |
| US1415054 | | | 40 | 12 | 5 |
| US1415058 | | 80 | 12 | 5 | |
| US14150510 | | 100 | 12 | 5 | |
| US14150512 | | 120 | 12 | 5 | |
| US14150515 | | 150 | 12 | 5 | |
| US14150520 | | 200 | 12 | 5 | |
| US14150530 | | 300 | 12 | 5 | |
| US1415062 | | 6 | 20 | 12 | 5 |
| US1415064 | | | 40 | 12 | 5 |
| US1415068 | 80 | | 12 | 5 | |
| US14150610 | 100 | | 12 | 5 | |
| US14150612 | 120 | | 12 | 5 | |
| US14150615 | 150 | | 12 | 5 | |
| US14150620 | 200 | | 12 | 5 | |
| US14150630 | 300 | | 12 | 5 | |
| US1415072 | 7 | | 20 | 10 | 5 |
| US1415074 | | | 40 | 10 | 5 |
| US1415078 | | 80 | 10 | 5 | |
| US14150710 | | 100 | 10 | 5 | |
| US14150712 | | 120 | 10 | 5 | |
| US14150715 | | 150 | 10 | 5 | |
| US14150720 | | 200 | 10 | 5 | |
| US14150730 | | 300 | 10 | 5 | |

0.014" guidewire compatible

Ultraverse™ 035 PTA Balloon Dilatation Catheter

| 75 cm Catheter Length | | | | | | |
|-----------------------|-----------------------|---------------------|------------------------|----------------------------|-----------------|---|
| Order code | Balloon Diameter (mm) | Balloon Length (mm) | Nominal Pressure (atm) | Rated Burst Pressure (atm) | Sheath Size (F) | |
| U357532 | 3 | 20 | 8 | 21 | 5 | |
| U357534 | | 40 | 8 | 21 | 5 | |
| U357536 | | 60 | 8 | 21 | 5 | |
| U357538 | | 80 | 8 | 21 | 5 | |
| U3575310 | | 100 | 8 | 19 | 5 | |
| U3575312 | | 120 | 8 | 19 | 5 | |
| U3575315 | | 150 | 8 | 19 | 5 | |
| U3575320 | | 200 | 8 | 19 | 5 | |
| U3575325 | | 250 | 8 | 19 | 5 | |
| U3575330 | | 300 | 8 | 19 | 5 | |
| U357542 | | 4 | 20 | 8 | 20 | 5 |
| U357544 | | | 40 | 8 | 20 | 5 |
| U357546 | 60 | | 8 | 20 | 5 | |
| U357548 | 80 | | 8 | 20 | 5 | |
| U3575410 | 100 | | 8 | 19 | 5 | |
| U3575412 | 120 | | 8 | 19 | 5 | |
| U3575415 | 150 | | 8 | 19 | 5 | |
| U3575420 | 200 | | 8 | 19 | 5 | |
| U3575425 | 250 | | 8 | 19 | 5 | |
| U3575430 | 300 | | 8 | 19 | 5 | |
| U357552 | 5 | | 20 | 8 | 17 | 5 |
| U357554 | | | 40 | 8 | 17 | 5 |
| U357556 | | 60 | 8 | 17 | 5 | |
| U357558 | | 80 | 8 | 17 | 5 | |
| U3575510 | | 100 | 8 | 16 | 5 | |
| U3575512 | | 120 | 8 | 16 | 5 | |
| U3575515 | | 150 | 8 | 16 | 5 | |
| U3575520 | | 200 | 8 | 16 | 5 | |
| U3575525 | | 250 | 8 | 16 | 5 | |
| U3575530 | | 300 | 8 | 16 | 5 | |
| U357562 | | 6 | 20 | 8 | 15 | 5 |
| U357564 | | | 40 | 8 | 15 | 5 |
| U357566 | 60 | | 8 | 15 | 5 | |
| U357568 | 80 | | 8 | 15 | 5 | |
| U3575610 | 100 | | 8 | 14 | 5 | |
| U3575612 | 120 | | 8 | 14 | 5 | |
| U3575615 | 150 | | 8 | 14 | 5 | |
| U3575620 | 200 | | 8 | 14 | 5 | |
| U3575625 | 250 | | 8 | 14 | 5 | |
| U3575630 | 300 | | 8 | 14 | 5 | |

| 75 cm Catheter Length | | | | | | | |
|-----------------------|-----------------------|---------------------|------------------------|----------------------------|-----------------|----|---|
| Order code | Balloon Diameter (mm) | Balloon Length (mm) | Nominal Pressure (atm) | Rated Burst Pressure (atm) | Sheath Size (F) | | |
| U357572 | 7 | 20 | 8 | 14 | 5 | | |
| U357574 | | 40 | 8 | 14 | 5 | | |
| U357576 | | 60 | 8 | 14 | 5 | | |
| U357578 | | 80 | 8 | 14 | 5 | | |
| U3575710 | | 100 | 8 | 11 | 5 | | |
| U3575712 | | 120 | 8 | 11 | 5 | | |
| U3575715 | | 150 | 8 | 11 | 5 | | |
| U3575720 | | 200 | 8 | 11 | 5 | | |
| U3575725 | | 250 | 8 | 11 | 6 | | |
| U3575730 | | 300 | 8 | 11 | 6 | | |
| U357582 | | 8 | 20 | 6 | 10 | 5 | |
| U357584 | | | 40 | 6 | 10 | 5 | |
| U357586 | 60 | | 6 | 10 | 5 | | |
| U357588 | 80 | | 6 | 10 | 5 | | |
| U3575810 | 100 | | 6 | 13 | 6 | | |
| U3575812 | 120 | | 6 | 13 | 6 | | |
| U3575815 | 150 | | 6 | 13 | 6 | | |
| U3575820 | 200 | | 6 | 13 | 6 | | |
| U357592 | 9 | | 20 | 6 | 12 | 6 | |
| U357594 | | | 40 | 6 | 12 | 6 | |
| U357596 | | | 60 | 6 | 11 | 6 | |
| U357598 | | | 80 | 6 | 11 | 6 | |
| U3575910 | | 100 | 6 | 11 | 6 | | |
| U3575102 | | 10 | 20 | 6 | 11 | 6 | |
| U3575104 | | | 40 | 6 | 11 | 6 | |
| U3575106 | | | 60 | 6 | 10 | 6 | |
| U3575108 | | | 80 | 6 | 10 | 6 | |
| U35751010 | | | 100 | 6 | 10 | 6 | |
| U3575122 | | | 12 | 20 | 6 | 11 | 7 |
| U3575124 | | | | 40 | 6 | 11 | 7 |
| U3575126 | 60 | | | 6 | 9 | 7 | |
| U3575128 | 80 | | | 6 | 9 | 7 | |
| U35751210 | 100 | | | 6 | 9 | 7 | |

0.035" guidewire compatible

Units per case: 1

| 130 cm Shaft Length | | | | | | |
|---------------------|-----------------------|---------------------|------------------------|----------------------------|-----------------|---|
| Order code | Balloon Diameter (mm) | Balloon Length (mm) | Nominal Pressure (atm) | Rated Burst Pressure (atm) | Sheath Size (F) | |
| U3513032 | 3 | 20 | 8 | 21 | 5 | |
| U3513034 | | 40 | 8 | 21 | 5 | |
| U3513036 | | 60 | 8 | 21 | 5 | |
| U3513038 | | 80 | 8 | 21 | 5 | |
| U35130310 | | 100 | 8 | 19 | 5 | |
| U35130312 | | 120 | 8 | 19 | 5 | |
| U35130315 | | 150 | 8 | 19 | 5 | |
| U35130320 | | 200 | 8 | 19 | 5 | |
| U35130325 | | 250 | 8 | 19 | 5 | |
| U35130330 | | 300 | 8 | 19 | 5 | |
| U3513042 | | 4 | 20 | 8 | 20 | 5 |
| U3513044 | | | 40 | 8 | 20 | 5 |
| U3513046 | 60 | | 8 | 20 | 5 | |
| U3513048 | 80 | | 8 | 20 | 5 | |
| U35130410 | 100 | | 8 | 19 | 5 | |
| U35130412 | 120 | | 8 | 19 | 5 | |
| U35130415 | 150 | | 8 | 19 | 5 | |
| U35130420 | 200 | | 8 | 19 | 5 | |
| U35130425 | 250 | | 8 | 19 | 5 | |
| U35130430 | 300 | | 8 | 19 | 5 | |
| U3513052 | 5 | | 20 | 8 | 17 | 5 |
| U3513054 | | | 40 | 8 | 17 | 5 |
| U3513056 | | 60 | 8 | 17 | 5 | |
| U3513058 | | 80 | 8 | 17 | 5 | |
| U35130510 | | 100 | 8 | 16 | 5 | |
| U35130512 | | 120 | 8 | 16 | 5 | |
| U35130515 | | 150 | 8 | 16 | 5 | |
| U35130520 | | 200 | 8 | 16 | 5 | |
| U35130525 | | 250 | 8 | 16 | 5 | |
| U35130530 | | 300 | 8 | 16 | 5 | |
| U3513062 | | 6 | 20 | 8 | 15 | 5 |
| U3513064 | | | 40 | 8 | 15 | 5 |
| U3513066 | 60 | | 8 | 15 | 5 | |
| U3513068 | 80 | | 8 | 15 | 5 | |
| U35130610 | 100 | | 8 | 14 | 5 | |
| U35130612 | 120 | | 8 | 14 | 5 | |
| U35130615 | 150 | | 8 | 14 | 5 | |
| U35130620 | 200 | | 8 | 14 | 5 | |
| U35130625 | 250 | | 8 | 14 | 5 | |
| U35130630 | 300 | | 8 | 14 | 5 | |

| 130 cm Shaft Length | | | | | | | |
|---------------------|-----------------------|---------------------|------------------------|----------------------------|-----------------|----|---|
| Order code | Balloon Diameter (mm) | Balloon Length (mm) | Nominal Pressure (atm) | Rated Burst Pressure (atm) | Sheath Size (F) | | |
| U3513072 | 7 | 20 | 8 | 14 | 5 | | |
| U3513074 | | 40 | 8 | 14 | 5 | | |
| U3513076 | | 60 | 8 | 14 | 5 | | |
| U3513078 | | 80 | 8 | 14 | 5 | | |
| U35130710 | | 100 | 8 | 11 | 5 | | |
| U35130712 | | 120 | 8 | 11 | 5 | | |
| U35130715 | | 150 | 8 | 11 | 5 | | |
| U35130720 | | 200 | 8 | 11 | 5 | | |
| U35130725 | | 250 | 8 | 11 | 6 | | |
| U35130730 | | 300 | 8 | 11 | 6 | | |
| U3513082 | | 8 | 20 | 6 | 10 | 5 | |
| U3513084 | | | 40 | 6 | 10 | 5 | |
| U3513086 | 60 | | 6 | 10 | 5 | | |
| U3513088 | 80 | | 6 | 10 | 5 | | |
| U35130810 | 100 | | 6 | 13 | 6 | | |
| U35130812 | 120 | | 6 | 13 | 6 | | |
| U35130815 | 150 | | 6 | 13 | 6 | | |
| U35130820 | 200 | | 6 | 13 | 6 | | |
| U3513092 | 9 | | 20 | 6 | 12 | 6 | |
| U3513094 | | | 40 | 6 | 12 | 6 | |
| U3513096 | | | 60 | 6 | 11 | 6 | |
| U3513098 | | | 80 | 6 | 11 | 6 | |
| U35130910 | | 100 | 6 | 11 | 6 | | |
| U35130102 | | 10 | 20 | 6 | 11 | 6 | |
| U35130104 | | | 40 | 6 | 11 | 6 | |
| U35130106 | | | 60 | 6 | 10 | 6 | |
| U35130108 | | | 80 | 6 | 10 | 6 | |
| U351301010 | | | 100 | 6 | 10 | 6 | |
| U35130122 | | | 12 | 20 | 6 | 11 | 7 |
| U35130124 | | | | 40 | 6 | 11 | 7 |
| U35130126 | 60 | | | 6 | 9 | 7 | |
| U35130128 | 80 | | | 6 | 9 | 7 | |
| U351301210 | 100 | | | 6 | 9 | 7 | |

0.035" guidewire compatible

Units per case: 1

Ultraverse™ 018 PTA Dilatation Catheter

| 75 cm Catheter Length | | | | | | |
|-----------------------|-----------------------|---------------------|------------------------|----------------------------|-----------------|---|
| Order code | Balloon Diameter (mm) | Balloon Length (mm) | Nominal Pressure (atm) | Rated Burst Pressure (atm) | Sheath Size (F) | |
| U87522 | 2 | 20 | 6 | 16 | 4 | |
| U87524 | | 40 | 6 | 16 | 4 | |
| U875210 | | 100 | 6 | 15 | 4 | |
| U875212 | | 120 | 6 | 15 | 4 | |
| U875215 | | 150 | 6 | 15 | 4 | |
| U875222 | | 220 | 6 | 15 | 4 | |
| U875230 | | 300 | 6 | 15 | 4 | |
| U8752H2 | | 2.5 | 20 | 6 | 16 | 4 |
| U8752H4 | | | 40 | 6 | 16 | 4 |
| U8752H10 | 100 | | 6 | 15 | 4 | |
| U8752H12 | 120 | | 6 | 15 | 4 | |
| U8752H15 | 150 | | 6 | 15 | 4 | |
| U8752H22 | 220 | | 6 | 15 | 4 | |
| U8752H30 | 300 | | 6 | 15 | 4 | |
| U87532 | 3 | | 20 | 6 | 16 | 4 |
| U87534 | | | 40 | 6 | 16 | 4 |
| U875310 | | 100 | 6 | 15 | 4 | |
| U875312 | | 120 | 6 | 15 | 4 | |
| U875315 | | 150 | 6 | 15 | 4 | |
| U875322 | | 220 | 6 | 15 | 4 | |
| U875330 | | 300 | 6 | 15 | 4 | |
| U87542 | | 4 | 20 | 6 | 16 | 4 |
| U87544 | | | 40 | 6 | 16 | 4 |
| U875410 | 100 | | 6 | 15 | 4 | |
| U875412 | 120 | | 6 | 15 | 4 | |
| U875415 | 150 | | 6 | 15 | 4 | |
| U875422 | 220 | | 6 | 15 | 4 | |
| U875430 | 300 | | 6 | 15 | 5 | |
| U87552 | 5 | | 20 | 6 | 14 | 5 |
| U87554 | | | 40 | 6 | 14 | 5 |
| U875510 | | 100 | 6 | 13 | 5 | |
| U875512 | | 120 | 6 | 13 | 5 | |
| U875515 | | 150 | 6 | 13 | 5 | |
| U875522 | | 220 | 6 | 13 | 5 | |
| U875530 | | 300 | 6 | 13 | 5 | |
| U87562 | | 6 | 20 | 6 | 14 | 5 |
| U87564 | | | 40 | 6 | 14 | 5 |
| U875610 | 100 | | 6 | 12 | 5 | |
| U875612 | 120 | | 6 | 12 | 5 | |
| U875615 | 150 | | 6 | 12 | 5 | |
| U875622 | 220 | | 6 | 12 | 5 | |
| U875630 | 300 | | 6 | 12 | 5 | |
| U87574 | 7 | | 40 | 6 | 12 | 5 |
| U87584 | 8 | | 40 | 6 | 12 | 6 |
| U87594 | 9 | 40 | 6 | 11 | 6 | |

| 130 cm Catheter Length | | | | | |
|------------------------|-----------------------|---------------------|------------------------|----------------------------|-----------------|
| Order code | Balloon Diameter (mm) | Balloon Length (mm) | Nominal Pressure (atm) | Rated Burst Pressure (atm) | Sheath Size (F) |
| U813022 | 2 | 20 | 6 | 16 | 4 |
| U813024 | | 40 | 6 | 16 | 4 |
| U813026 | | 60 | 6 | 16 | 4 |
| U813028 | | 80 | 6 | 15 | 4 |
| U8130210 | | 100 | 6 | 15 | 4 |
| U8130212 | | 120 | 6 | 15 | 4 |
| U8130215 | | 150 | 6 | 15 | 4 |
| U8130220 | | 200 | 6 | 15 | 4 |
| U8130222 | | 220 | 6 | 15 | 4 |
| U8130230 | 300 | 6 | 15 | 4 | |
| U81302H2 | 2.5 | 20 | 6 | 16 | 4 |
| U81302H4 | | 40 | 6 | 16 | 4 |
| U81302H6 | | 60 | 6 | 16 | 4 |
| U81302H8 | | 80 | 6 | 15 | 4 |
| U81302H10 | | 100 | 6 | 15 | 4 |
| U81302H12 | | 120 | 6 | 15 | 4 |
| U81302H15 | | 150 | 6 | 15 | 4 |
| U81302H20 | | 200 | 6 | 15 | 4 |
| U81302H22 | | 220 | 6 | 15 | 4 |
| U81302H30 | 300 | 6 | 15 | 4 | |
| U813032 | 3 | 20 | 6 | 16 | 4 |
| U813034 | | 40 | 6 | 16 | 4 |
| U813036 | | 60 | 6 | 16 | 4 |
| U813038 | | 80 | 6 | 15 | 4 |
| U8130310 | | 100 | 6 | 15 | 4 |
| U8130312 | | 120 | 6 | 15 | 4 |
| U8130315 | | 150 | 6 | 15 | 4 |
| U8130320 | | 200 | 6 | 15 | 4 |
| U8130322 | | 220 | 6 | 15 | 4 |
| U8130330 | 300 | 6 | 15 | 4 | |
| U81303H2 | 3.5 | 20 | 6 | 16 | 4 |
| U81303H4 | | 40 | 6 | 16 | 4 |
| U81303H6 | | 60 | 6 | 16 | 4 |
| U81303H8 | | 80 | 6 | 15 | 4 |
| U81303H10 | | 100 | 6 | 15 | 4 |
| U81303H12 | | 120 | 6 | 15 | 4 |
| U81303H15 | | 150 | 6 | 15 | 4 |
| U81303H20 | | 200 | 6 | 15 | 4 |
| U81303H22 | | 220 | 6 | 15 | 4 |
| U81303H30 | 300 | 6 | 15 | 4 | |

Units per case: 1

| 130 cm Catheter Length | | | | | |
|------------------------|-----------------------|---------------------|------------------------|----------------------------|-----------------|
| Order code | Balloon Diameter (mm) | Balloon Length (mm) | Nominal Pressure (atm) | Rated Burst Pressure (atm) | Sheath Size (F) |
| U813042 | 4 | 20 | 6 | 16 | 4 |
| U813044 | | 40 | 6 | 16 | 4 |
| U813046 | | 60 | 6 | 16 | 4 |
| U813048 | | 80 | 6 | 15 | 4 |
| U8130410 | | 100 | 6 | 15 | 4 |
| U8130412 | | 120 | 6 | 15 | 4 |
| U8130415 | | 150 | 6 | 15 | 4 |
| U8130420 | | 200 | 6 | 15 | 4 |
| U8130422 | | 220 | 6 | 15 | 4 |
| U8130430 | 300 | 6 | 15 | 5 | |
| U813052 | 5 | 20 | 6 | 14 | 5 |
| U813054 | | 40 | 6 | 14 | 5 |
| U813056 | | 60 | 6 | 14 | 5 |
| U813058 | | 80 | 6 | 13 | 5 |
| U8130510 | | 100 | 6 | 13 | 5 |
| U8130512 | | 120 | 6 | 13 | 5 |
| U8130515 | | 150 | 6 | 13 | 5 |
| U8130520 | | 200 | 6 | 13 | 5 |
| U8130522 | | 220 | 6 | 13 | 5 |
| U8130530 | 300 | 6 | 13 | 5 | |
| U813062 | 6 | 20 | 6 | 14 | 5 |
| U813064 | | 40 | 6 | 14 | 5 |
| U813066 | | 60 | 6 | 14 | 5 |
| U813068 | | 80 | 6 | 12 | 5 |
| U8130610 | | 100 | 6 | 12 | 5 |
| U8130612 | | 120 | 6 | 12 | 5 |
| U8130615 | | 150 | 6 | 12 | 5 |
| U8130620 | | 200 | 6 | 12 | 5 |
| U8130622 | | 220 | 6 | 12 | 5 |
| U8130630 | 300 | 6 | 12 | 5 | |
| U813072 | 7 | 20 | 6 | 12 | 5 |
| U813074 | | 40 | 6 | 12 | 5 |
| U813076 | | 60 | 6 | 12 | 5 |
| U813078 | | 80 | 6 | 11 | 5 |
| U8130710 | | 100 | 6 | 11 | 5 |
| U8130712 | | 120 | 6 | 11 | 5 |
| U8130715 | | 150 | 6 | 11 | 5 |
| U8130720 | | 200 | 6 | 11 | 5 |
| U8130722 | | 220 | 6 | 11 | 5 |
| U8130730 | 300 | 6 | 11 | 5 | |

| 200 cm Catheter Length | | | | | |
|------------------------|-----------------------|---------------------|------------------------|----------------------------|-----------------|
| Order code | Balloon Diameter (mm) | Balloon Length (mm) | Nominal Pressure (atm) | Rated Burst Pressure (atm) | Sheath Size (F) |
| U820044 | 4 | 40 | 6 | 16 | 4 |
| U820046 | | 60 | 6 | 16 | 4 |
| U820048 | | 80 | 6 | 15 | 4 |
| U8200410 | | 100 | 6 | 15 | 4 |
| U8200412 | | 120 | 6 | 15 | 4 |
| U8200415 | | 150 | 6 | 15 | 4 |
| U8200420 | | 200 | 6 | 15 | 4 |
| U8200422 | | 220 | 6 | 15 | 4 |
| U8200430 | | 300 | 6 | 15 | 5 |
| U820054 | 5 | 40 | 6 | 14 | 5 |
| U820056 | | 60 | 6 | 14 | 5 |
| U820058 | | 80 | 6 | 13 | 5 |
| U8200510 | | 100 | 6 | 13 | 5 |
| U8200512 | | 120 | 6 | 13 | 5 |
| U8200515 | | 150 | 6 | 13 | 5 |
| U8200520 | | 200 | 6 | 13 | 5 |
| U8200522 | | 220 | 6 | 13 | 5 |
| U8200530 | | 300 | 6 | 13 | 5 |
| U820064 | 6 | 40 | 6 | 14 | 5 |
| U820066 | | 60 | 6 | 14 | 5 |
| U820068 | | 80 | 6 | 12 | 5 |
| U8200610 | | 100 | 6 | 12 | 5 |
| U8200612 | | 120 | 6 | 12 | 5 |
| U8200615 | | 150 | 6 | 12 | 5 |
| U8200620 | | 200 | 6 | 12 | 5 |
| U8200622 | | 220 | 6 | 12 | 5 |
| U8200630 | | 300 | 6 | 12 | 5 |
| U820074 | 7 | 40 | 6 | 12 | 5 |
| U820076 | | 60 | 6 | 12 | 5 |
| U820078 | | 80 | 6 | 11 | 5 |
| U8200710 | | 100 | 6 | 11 | 5 |
| U8200712 | | 120 | 6 | 11 | 5 |
| U8200715 | | 150 | 6 | 11 | 5 |
| U8200720 | | 200 | 6 | 11 | 5 |
| U8200722 | | 220 | 6 | 11 | 5 |
| U8200730 | | 300 | 6 | 11 | 5 |
| U820084 | 8 | 40 | 6 | 12 | 6 |
| U820086 | | 60 | 6 | 12 | 6 |
| U820094 | | 9 | 40 | 6 | 11 |
| U820096 | 60 | | 6 | 11 | 6 |

0.018" guidewire compatible

Units per case: 1

Ultraverse™ 014 PTA Dilatation Catheter

| 150 cm Catheter Length | | | | | | | | | | | | |
|------------------------|-----------------------|---------------------|------------------------|----------------------------|-----------------|------------|-----------------------|---------------------|------------------------|----------------------------|-----------------|---|
| Order code | Balloon Diameter (mm) | Balloon Length (mm) | Nominal Pressure (atm) | Rated Burst Pressure (atm) | Sheath Size (F) | Order code | Balloon Diameter (mm) | Balloon Length (mm) | Nominal Pressure (atm) | Rated Burst Pressure (atm) | Sheath Size (F) | |
| U41501H2 | 1.5 | 20 | 6 | 16 | 4 | U41503H2 | 3.5 | 20 | 6 | 16 | 4 | |
| U41501H4 | | 40 | 6 | 16 | 4 | U41503H4 | | 40 | 6 | 16 | 4 | |
| U41501H6 | | 60 | 6 | 16 | 4 | U41503H6 | | 60 | 6 | 16 | 4 | |
| U41501H8 | | 80 | 6 | 16 | 4 | U41503H8 | | 80 | 6 | 15 | 4 | |
| U41501H10 | | 100 | 6 | 16 | 4 | U41503H10 | | 100 | 6 | 15 | 4 | |
| U41501H12 | | 120 | 6 | 16 | 4 | U41503H12 | | 120 | 6 | 15 | 4 | |
| U41501H15 | | 150 | 6 | 16 | 4 | U41503H15 | | 150 | 6 | 15 | 4 | |
| U415022 | | 2 | 20 | 6 | 16 | 4 | | U41503H22 | 220 | 6 | 15 | 4 |
| U415024 | | | 40 | 6 | 16 | 4 | | U41503H30 | 300 | 6 | 15 | 4 |
| U415026 | | | 60 | 6 | 16 | 4 | | U415042 | 20 | 6 | 16 | 4 |
| U415028 | 80 | | 6 | 15 | 4 | U415044 | 40 | 6 | 16 | 4 | | |
| U4150210 | 100 | | 6 | 15 | 4 | U415046 | 60 | 6 | 16 | 4 | | |
| U4150212 | 120 | | 6 | 15 | 4 | U415048 | 80 | 6 | 15 | 4 | | |
| U4150215 | 150 | | 6 | 15 | 4 | U4150410 | 100 | 6 | 15 | 4 | | |
| U4150222 | 220 | | 6 | 15 | 4 | U4150412 | 120 | 6 | 15 | 4 | | |
| U4150230 | 300 | | 6 | 15 | 4 | U4150415 | 150 | 6 | 15 | 5 | | |
| U41502H2 | 2.5 | | 20 | 6 | 16 | 4 | U4150422 | 220 | 6 | 15 | 5 | |
| U41502H4 | | 40 | 6 | 16 | 4 | U4150430 | 300 | 6 | 15 | 5 | | |
| U41502H6 | | 60 | 6 | 16 | 4 | U415052 | 20 | 6 | 14 | 5 | | |
| U41502H8 | | 80 | 6 | 15 | 4 | U415054 | 40 | 6 | 14 | 5 | | |
| U41502H10 | | 100 | 6 | 15 | 4 | U415056 | 60 | 6 | 14 | 5 | | |
| U41502H12 | | 120 | 6 | 15 | 4 | U415058 | 80 | 6 | 13 | 5 | | |
| U41502H15 | | 150 | 6 | 15 | 4 | U4150510 | 100 | 6 | 13 | 5 | | |
| U41502H22 | | 220 | 6 | 15 | 4 | U4150512 | 120 | 6 | 13 | 5 | | |
| U41502H30 | | 300 | 6 | 15 | 4 | U4150515 | 150 | 6 | 13 | 5 | | |
| U415032 | | 3 | 20 | 6 | 16 | 4 | U4150522 | 220 | 6 | 13 | 5 | |
| U415034 | 40 | | 6 | 16 | 4 | U4150530 | 300 | 6 | 13 | 5 | | |
| U415036 | 60 | | 6 | 16 | 4 | | | | | | | |
| U415038 | 80 | | 6 | 15 | 4 | | | | | | | |
| U4150310 | 100 | | 6 | 15 | 4 | | | | | | | |
| U4150312 | 120 | | 6 | 15 | 4 | | | | | | | |
| U4150315 | 150 | | 6 | 15 | 4 | | | | | | | |
| U4150322 | 220 | | 6 | 15 | 4 | | | | | | | |
| U4150330 | 300 | | 6 | 15 | 4 | | | | | | | |

0.014" guidewire compatible

Units per case: 1

Ultraverse™ RX PTA Dilatation Catheter

| 150 cm, 200cm Catheter Length | | | | | | |
|-------------------------------|------------------|-----------------------|---------------------|------------------------|----------------------------|-----------------|
| Order code 150mm | Order code 200mm | Balloon Diameter (mm) | Balloon Length (mm) | Nominal Pressure (atm) | Rated Burst Pressure (atm) | Sheath Size (F) |
| U41501Q1HRX | | 1.25 | 15 | 6 | 16 | 4 |
| U41501Q2RX | U42001Q2RX | 1.25 | 20 | 6 | 16 | 4 |
| U41501Q4RX | U42001Q4RX | 1.25 | 40 | 6 | 16 | 4 |
| U41501H1HRX | U42001H1HRX | 1.5 | 15 | 6 | 16 | 4 |
| U41501H2RX | U42001H2RX | 1.5 | 20 | 6 | 16 | 4 |
| U41501H4RX | U42001H4RX | 1.5 | 40 | 6 | 16 | 4 |
| U41501H8RX | U42001H8RX | 1.5 | 80 | 6 | 16 | 4 |
| U41501H12RX | U42001H12RX | 1.5 | 120 | 6 | 16 | 4 |
| | U420021HRX | 2 | 15 | 6 | 16 | 4 |
| U415022RX | U420022RX | 2 | 20 | 6 | 16 | 4 |
| U415024RX | U420024RX | 2 | 40 | 6 | 16 | 4 |
| U415026RX | | 2 | 60 | 6 | 16 | 4 |
| U415028RX | U420028RX | 2 | 80 | 6 | 15 | 4 |
| U4150210RX | U4200210RX | 2 | 100 | 6 | 15 | 4 |
| U4150212RX | U4200212RX | 2 | 120 | 6 | 15 | 4 |
| U4150215RX | U4200215RX | 2 | 150 | 6 | 15 | 4 |
| U4150220RX | U4200220RX | 2 | 200 | 6 | 15 | 4 |
| U4150225RX | U4200225RX | 2 | 250 | 6 | 15 | 4 |
| U4150230RX | U4200230RX | 2 | 300 | 6 | 15 | 4 |
| U41502H1HRX | U42002H1HRX | 2.5 | 15 | 6 | 16 | 4 |
| U41502H2RX | U42002H2RX | 2.5 | 20 | 6 | 16 | 4 |
| U41502H4RX | U42002H4RX | 2.5 | 40 | 6 | 16 | 4 |
| U41502H6RX | | 2.5 | 60 | 6 | 16 | 4 |
| U41502H8RX | U42002H8RX | 2.5 | 80 | 6 | 15 | 4 |
| U41502H10RX | U42002H10RX | 2.5 | 100 | 6 | 15 | 4 |
| U41502H12RX | U42002H12RX | 2.5 | 120 | 6 | 15 | 4 |
| U41502H15RX | U42002H15RX | 2.5 | 150 | 6 | 15 | 4 |
| U41502H20RX | U42002H20RX | 2.5 | 200 | 6 | 15 | 4 |
| U41502H25RX | U42002H25RX | 2.5 | 250 | 6 | 15 | 4 |
| U41502H30RX | U42002H30RX | 2.5 | 300 | 6 | 15 | 4 |
| | U420031HRX | 3 | 15 | 6 | 16 | 4 |
| U415032RX | U420032RX | 3 | 20 | 6 | 16 | 4 |
| U415034RX | U420034RX | 3 | 40 | 6 | 16 | 4 |
| U415036RX | U420036RX | 3 | 60 | 6 | 16 | 4 |
| U415038RX | U420038RX | 3 | 80 | 6 | 15 | 4 |
| U4150310RX | U4200310RX | 3 | 100 | 6 | 15 | 4 |
| U4150312RX | U4200312RX | 3 | 120 | 6 | 15 | 4 |
| U4150315RX | U4200315RX | 3 | 150 | 6 | 15 | 4 |
| U4150320RX | U4200320RX | 3 | 200 | 6 | 15 | 4 |
| U4150325RX | U4200325RX | 3 | 250 | 6 | 15 | 4 |
| U4150330RX | U4200330RX | 3 | 300 | 6 | 15 | 4 |

0.014" guidewire compatible

Units per case: 1

| 150 cm, 200cm Catheter Length | | | | | | |
|-------------------------------|------------------|-----------------------|---------------------|------------------------|----------------------------|-----------------|
| Order code 150mm | Order code 200mm | Balloon Diameter (mm) | Balloon Length (mm) | Nominal Pressure (atm) | Rated Burst Pressure (atm) | Sheath Size (F) |
| U41503H2RX | U42003H2RX | 3.5 | 20 | 6 | 16 | 4 |
| U41503H4RX | U42003H4RX | 3.5 | 40 | 6 | 16 | 4 |
| U41503H6RX | U42003H6RX | 3.5 | 60 | 6 | 16 | 4 |
| U41503H8RX | U42003H8RX | 3.5 | 80 | 6 | 15 | 4 |
| U41503H10RX | U42003H10RX | 3.5 | 100 | 6 | 15 | 4 |
| U41503H12RX | U42003H12RX | 3.5 | 120 | 6 | 15 | 4 |
| U41503H15RX | U42003H15RX | 3.5 | 150 | 6 | 15 | 4 |
| U41503H20RX | U42003H20RX | 3.5 | 200 | 6 | 15 | 4 |
| U41503H25RX | U42003H25RX | 3.5 | 250 | 6 | 15 | 4 |
| U41503H30RX | U42003H30RX | 3.5 | 300 | 6 | 15 | 4 |
| U415041HRX | U420041HRX | 4 | 15 | 6 | 16 | 4 |
| U415042RX | U420042RX | 4 | 20 | 6 | 16 | 4 |
| U415044RX | U420044RX | 4 | 40 | 6 | 16 | 4 |
| U415046RX | U420046RX | 4 | 60 | 6 | 16 | 4 |
| U415048RX | U420048RX | 4 | 80 | 6 | 15 | 4 |
| U4150410RX | U4200410RX | 4 | 100 | 6 | 15 | 4 |
| U4150412RX | U4200412RX | 4 | 120 | 6 | 15 | 4 |
| U4150415RX | U4200415RX | 4 | 150 | 6 | 15 | 5 |
| U4150420RX | U4200420RX | 4 | 200 | 6 | 15 | 5 |
| U4150425RX | U4200425RX | 4 | 250 | 6 | 15 | 5 |
| U4150430RX | U4200430RX | 4 | 300 | 6 | 15 | 5 |
| U415052RX | U420052RX | 5 | 20 | 6 | 14 | 5 |
| U415054RX | U420054RX | 5 | 40 | 6 | 14 | 5 |
| U415056RX | U420056RX | 5 | 60 | 6 | 14 | 5 |
| U415058RX | U420058RX | 5 | 80 | 6 | 13 | 5 |
| U4150510RX | U4200510RX | 5 | 100 | 6 | 13 | 5 |
| U4150512RX | U4200512RX | 5 | 120 | 6 | 13 | 5 |
| U4150515RX | U4200515RX | 5 | 150 | 6 | 13 | 5 |
| U4150520RX | U4200520RX | 5 | 200 | 6 | 13 | 5 |
| U4150525RX | U4200525RX | 5 | 250 | 6 | 13 | 5 |
| U4150530RX | U4200530RX | 5 | 300 | 6 | 13 | 5 |
| U415064RX | | 6 | 40 | 6 | 14 | 5 |
| U415066RX | | 6 | 60 | 6 | 14 | 5 |
| U415074RX | | 7 | 40 | 6 | 12 | 5 |
| U415076RX | | 7 | 60 | 6 | 12 | 5 |

0.014" guidewire compatible

Units per case: 1

Lutonix™ 035 Drug Coated Balloon PTA Catheter

| 75 cm Shaft Length | | | | | |
|--------------------|-----------------------|---------------------|------------------------|----------------------------|-----------------|
| Order code | Balloon Diameter (mm) | Balloon Length (mm) | Nominal Pressure (atm) | Rated Burst Pressure (atm) | Sheath Size (F) |
| 9090475 500040 | 5 | 40 | 6 | 12 | 5 |
| 9090475 500060 | | 60 | 6 | 12 | 5 |
| 9090475 500080 | | 80 | 6 | 12 | 5 |
| 9090475 600040 | 6 | 40 | 6 | 12 | 5 |
| 9090475 600060 | | 60 | 6 | 12 | 5 |
| 9090475 600080 | | 80 | 6 | 12 | 5 |
| 9090475 700040 | 7 | 40 | 6 | 12 | 5 |
| 9090475 700060 | | 60 | 6 | 12 | 5 |
| 9090475 800040 | 8 | 40 | 6 | 12 | 7 |
| 9090475 800060 | | 60 | 6 | 12 | 7 |
| 9090475 900040 | 9 | 40 | 6 | 11 | 7 |
| 9090475 900060 | | 60 | 6 | 11 | 7 |
| 9090475 100040 | 10 | 40 | 6 | 11 | 8 |
| 9090475 100060 | | 60 | 6 | 11 | 8 |
| 9090475 120040 | 12 | 40 | 6 | 10 | 10 |

| 100 cm Shaft Length | | | | | |
|---------------------|-----------------------|---------------------|------------------------|----------------------------|-----------------|
| Order code | Balloon Diameter (mm) | Balloon Length (mm) | Nominal Pressure (atm) | Rated Burst Pressure (atm) | Sheath Size (F) |
| 9090410 400040 | 4 | 40 | 6 | 12 | 5 |
| 9090410 400060 | | 60 | 6 | 12 | 5 |
| 9090410 400080 | | 80 | 6 | 12 | 5 |
| 9090410 400100 | | 100 | 6 | 12 | 5 |
| 9090410 400120 | | 120 | 6 | 12 | 5 |
| 9090410 400150 | | 150 | 6 | 12 | 5 |
| 9090410 500040 | 5 | 40 | 6 | 12 | 5 |
| 9090410 500060 | | 60 | 6 | 12 | 5 |
| 9090410 500080 | | 80 | 6 | 12 | 5 |
| 9090410 500100 | | 100 | 6 | 12 | 5 |
| 9090410 500120 | | 120 | 6 | 12 | 5 |
| 9090410 500150 | | 150 | 6 | 12 | 5 |
| 9090410 600040 | 6 | 40 | 6 | 12 | 5 |
| 9090410 600060 | | 60 | 6 | 12 | 5 |
| 9090410 600080 | | 80 | 6 | 12 | 5 |
| 9090410 600100 | | 100 | 6 | 12 | 5 |
| 9090410 600120 | | 120 | 6 | 12 | 5 |
| 9090410 600150 | | 150 | 6 | 12 | 5 |

| 130 cm Shaft Length | | | | | |
|---------------------|-----------------------|---------------------|------------------------|----------------------------|-----------------|
| Order code | Balloon Diameter (mm) | Balloon Length (mm) | Nominal Pressure (atm) | Rated Burst Pressure (atm) | Sheath Size (F) |
| 9090413 400040 | 4 | 40 | 6 | 12 | 5 |
| 9090413 400060 | | 60 | 6 | 12 | 5 |
| 9090413 400080 | | 80 | 6 | 12 | 5 |
| 9090413 400100 | | 100 | 6 | 12 | 5 |
| 9090413 400120 | | 120 | 6 | 12 | 5 |
| 9090413 400150 | | 150 | 6 | 12 | 5 |
| 9090413 500040 | 5 | 40 | 6 | 12 | 5 |
| 9090413 500060 | | 60 | 6 | 12 | 5 |
| 9090413 500080 | | 80 | 6 | 12 | 5 |
| 9090413 500100 | | 100 | 6 | 12 | 5 |
| 9090413 500120 | | 120 | 6 | 12 | 5 |
| 9090413 500150 | | 150 | 6 | 12 | 5 |
| 9090413 600040 | 6 | 40 | 6 | 12 | 5 |
| 9090413 600060 | | 60 | 6 | 12 | 5 |
| 9090413 600080 | | 80 | 6 | 12 | 5 |
| 9090413 600100 | | 100 | 6 | 12 | 5 |
| 9090413 600120 | | 120 | 6 | 12 | 5 |
| 9090413 600150 | | 150 | 6 | 12 | 5 |

0.035" guidewire compatible

Units per case: 1

Lutonix™ 018 Drug Coated Balloon PTA Catheter

| 100 cm Catheter Length | | | | |
|------------------------|-----------------------|---------------------|-----------------|----|
| Order code | Balloon Diameter (mm) | Balloon Length (mm) | Sheath Size (F) | |
| 9111410400040 | 4 | 40 | 4F | |
| 9111410400060 | | 60 | 4F | |
| 9111410400080 | | 80 | 4F | |
| 9111410400100 | | 100 | 4F | |
| 9111410400120 | | 120 | 4F | |
| 9111410400150 | | 150 | 4F | |
| 9111410400220 | | 220 | 4F | |
| 9111410500040 | | 5 | 40 | 5F |
| 9111410500060 | | | 60 | 5F |
| 9111410500080 | | | 80 | 5F |
| 9111410500100 | 100 | | 5F | |
| 9111410500120 | 120 | | 5F | |
| 9111410500150 | 150 | | 5F | |
| 9111410500220 | 220 | | 5F | |
| 9111410600040 | 6 | | 40 | 5F |
| 9111410600060 | | | 60 | 5F |
| 9111410600080 | | | 80 | 5F |
| 9111410600100 | | 100 | 5F | |
| 9111410600120 | | 120 | 5F | |
| 9111410600150 | | 150 | 5F | |
| 9111410700040 | | 7 | 40 | 5F |
| 9111410700060 | | | 60 | 5F |

| 130 cm Catheter Length | | | | |
|------------------------|-----------------------|---------------------|-----------------|----|
| Order code | Balloon Diameter (mm) | Balloon Length (mm) | Sheath Size (F) | |
| 9111413400040 | 4 | 40 | 4F | |
| 9111413400060 | | 60 | 4F | |
| 9111413400080 | | 80 | 4F | |
| 9111413400100 | | 100 | 4F | |
| 9111413400120 | | 120 | 4F | |
| 9111413400150 | | 150 | 4F | |
| 9111413400220 | | 220 | 4F | |
| 9111413500040 | | 5 | 40 | 5F |
| 9111413500060 | | | 60 | 5F |
| 9111413500080 | | | 80 | 5F |
| 9111413500100 | 100 | | 5F | |
| 9111413500120 | 120 | | 5F | |
| 9111413500150 | 150 | | 5F | |
| 9111413500220 | 220 | | 5F | |
| 9111413600040 | 6 | | 40 | 5F |
| 9111413600060 | | | 60 | 5F |
| 9111413600080 | | | 80 | 5F |
| 9111413600100 | | 100 | 5F | |
| 9111413600120 | | 120 | 5F | |
| 9111413600150 | | 150 | 5F | |
| 9111413700040 | | 7 | 40 | 5F |
| 9111413700060 | | | 60 | 5F |
| 9111413700080 | | | 80 | 5F |
| 9111413700100 | | | 100 | 5F |

Units per case: 1

Lutonix™ 014 Drug Coated Balloon PTA Catheter

| 150 cm Catheter Length | | | | |
|------------------------|-----------------------|---------------------|-----------------|----|
| Order code | Balloon Diameter (mm) | Balloon Length (mm) | Sheath Size (F) | |
| 9020515200040 | 2 | 40 | 4F | |
| 9020515200080 | | 80 | 4F | |
| 9020515200120 | | 120 | 4F | |
| 9020515200150 | | 150 | 4F | |
| 9020515250040 | | 2.5 | 40 | 4F |
| 9020515250080 | | | 80 | 4F |
| 9020515250120 | 120 | | 4F | |
| 9020515250150 | 150 | | 4F | |
| 9020515300040 | 3 | | 40 | 4F |
| 9020515300080 | | | 80 | 4F |
| 9020515300120 | | 120 | 4F | |
| 9020515300150 | | 150 | 4F | |
| 9020515350040 | | 3.5 | 40 | 4F |
| 9020515350080 | | | 80 | 4F |
| 9020515350120 | 120 | | 4F | |
| 9020515350150 | 150 | | 4F | |
| 9020515400040 | 4 | | 40 | 4F |
| 9020515400080 | | | 80 | 4F |
| 9020515400120 | | 120 | 4F | |
| 9020515400150 | | 150 | 4F | |

Units per case: 1

LifeStent™ 5F Vascular Stent System

| 80 cm Catheter Length | | | |
|-----------------------|---------------------|-------------------|-----------------|
| Order code | Stent Diameter (mm) | Stent Length (mm) | Sheath Size (F) |
| 5F050201C | 5 | 20 | 5 |
| 5F050301C | | 30 | 5 |
| 5F050401C | | 40 | 5 |
| 5F050601C | | 60 | 5 |
| 5F050801C | | 80 | 5 |
| 5F051001C | | 100 | 5 |
| 5F051201C | | 120 | 5 |
| 5F051501C | | 150 | 5 |
| 5F051701C | | 170 | 5 |
| 5F060201C | | 6 | 20 |
| 5F060301C | 30 | | 5 |
| 5F060401C | 40 | | 5 |
| 5F060601C | 60 | | 5 |
| 5F060801C | 80 | | 5 |
| 5F061001C | 100 | | 5 |
| 5F061201C | 120 | | 5 |
| 5F061501C | 150 | | 5 |

Continued...

| 80 cm Catheter Length | | | |
|-----------------------|---------------------|-------------------|-----------------|
| Order code | Stent Diameter (mm) | Stent Length (mm) | Sheath Size (F) |
| 5F070201C | 7 | 20 | 5 |
| 5F070301C | | 30 | 5 |
| 5F070401C | | 40 | 5 |
| 5F070601C | | 60 | 5 |
| 5F070801C | | 80 | 5 |
| 5F071001C | | 100 | 5 |
| 5F071201C | | 120 | 5 |

| 135 cm Catheter Length | | | | |
|------------------------|---------------------|-------------------|-----------------|---|
| Order code | Stent Diameter (mm) | Stent Length (mm) | Sheath Size (F) | |
| 5F050203C | 5 | 20 | 5 | |
| 5F050303C | | 30 | 5 | |
| 5F050403C | | 40 | 5 | |
| 5F050603C | | 60 | 5 | |
| 5F050803C | | 80 | 5 | |
| 5F051003C | | 100 | 5 | |
| 5F051203C | | 120 | 5 | |
| 5F051503C | | 150 | 5 | |
| 5F051703C | | 170 | 5 | |
| 5F060203C | | 6 | 20 | 5 |
| 5F060303C | 30 | | 5 | |
| 5F060403C | 40 | | 5 | |
| 5F060603C | 60 | | 5 | |
| 5F060803C | 80 | | 5 | |
| 5F061003C | 100 | | 5 | |
| 5F061203C | 120 | | 5 | |
| 5F061503C | 150 | | 5 | |
| 5F070203C | 7 | | 20 | 5 |
| 5F070303C | | | 30 | 5 |
| 5F070403C | | 40 | 5 | |
| 5F070603C | | 60 | 5 | |
| 5F070803C | | 80 | 5 | |
| 5F071003C | | 100 | 5 | |
| 5F071203C | | 120 | 5 | |

Units per case: 1

E•LUMINEXX™ Vascular Stent

| Order code | Stent Length (mm) | Stent Diameter (mm) | Catheter Length (cm) |
|------------|-------------------|---------------------|----------------------|
| ZVM04020 | 20 | 4 | 80 |
| ZVM04030 | 30 | | |
| ZVM04040 | 40 | | |
| ZVM04050 | 50 | | |
| ZVM04060 | 60 | | |
| ZVM04080 | 80 | | |
| ZVM04100 | 100 | | |
| ZVM04120 | 120 | | |
| ZVL04020 | 20 | | 135 |
| ZVL04030 | 30 | | |
| ZVL04040 | 40 | | |
| ZVL04050 | 50 | | |
| ZVL04060 | 60 | | |
| ZVL04080 | 80 | | |
| ZVL04100 | 100 | | |
| ZVL04120 | 120 | | |
| ZVM05020 | 20 | 5 | 80 |
| ZVM05030 | 30 | | |
| ZVM05040 | 40 | | |
| ZVM05050 | 50 | | |
| ZVM05060 | 60 | | |
| ZVM05080 | 80 | | |
| ZVM05100 | 100 | | |
| ZVM05120 | 120 | | |
| ZVL05020 | 20 | | 135 |
| ZVL05030 | 30 | | |
| ZVL05040 | 40 | | |
| ZVL05050 | 50 | | |
| ZVL05060 | 60 | | |
| ZVL05080 | 80 | | |
| ZVL05100 | 100 | | |
| ZVL05120 | 120 | | |
| ZVM06020 | 20 | 6 | 80 |
| ZVM06030 | 30 | | |
| ZVM06040 | 40 | | |
| ZVM06050 | 50 | | |
| ZVM06060 | 60 | | |
| ZVM06080 | 80 | | |
| ZVM06100 | 100 | | |
| ZVM06120 | 120 | | |
| ZVL06020 | 20 | | 135 |
| ZVL06030 | 30 | | |
| ZVL06040 | 40 | | |
| ZVL06050 | 50 | | |
| ZVL06060 | 60 | | |
| ZVL06080 | 80 | | |
| ZVL06100 | 100 | | |
| ZVL06120 | 120 | | |

| Order code | Stent Length (mm) | Stent Diameter (mm) | Catheter Length (cm) |
|------------|-------------------|---------------------|----------------------|
| ZVM07020 | 20 | 7 | 80 |
| ZVM07030 | 30 | | |
| ZVM07040 | 40 | | |
| ZVM07050 | 50 | | |
| ZVM07060 | 60 | | |
| ZVM07080 | 80 | | |
| ZVM07100 | 100 | | |
| ZVM07120 | 120 | | |
| ZVL07020 | 20 | | 135 |
| ZVL07030 | 30 | | |
| ZVL07040 | 40 | | |
| ZVL07050 | 50 | | |
| ZVL07060 | 60 | | |
| ZVL07080 | 80 | | |
| ZVL07100 | 100 | | |
| ZVL07120 | 120 | | |
| ZVM08020 | 20 | 8 | 80 |
| ZVM08030 | 30 | | |
| ZVM08040 | 40 | | |
| ZVM08050 | 50 | | |
| ZVM08060 | 60 | | |
| ZVM08080 | 80 | | |
| ZVM08100 | 100 | | |
| ZVM08120 | 120 | | |
| ZVL08020 | 20 | | 135 |
| ZVL08030 | 30 | | |
| ZVL08040 | 40 | | |
| ZVL08050 | 50 | | |
| ZVL08060 | 60 | | |
| ZVL08080 | 80 | | |
| ZVL08100 | 100 | | |
| ZVL08120 | 120 | | |
| ZVM09020 | 20 | 9 | 80 |
| ZVM09030 | 30 | | |
| ZVM09040 | 40 | | |
| ZVM09050 | 50 | | |
| ZVM09060 | 60 | | |
| ZVM09080 | 80 | | |
| ZVM09100 | 100 | | |
| ZVM09120 | 120 | | |
| ZVL09020 | 20 | | 135 |
| ZVL09030 | 30 | | |
| ZVL09040 | 40 | | |
| ZVL09050 | 50 | | |
| ZVL09060 | 60 | | |
| ZVL09080 | 80 | | |
| ZVL09100 | 100 | | |
| ZVL09120 | 120 | | |

0.035" guidewire compatible

| Order code | Stent Length (mm) | Stent Diameter (mm) | Catheter Length (cm) |
|------------|-------------------|---------------------|----------------------|
| ZVM10020 | 20 | 10 | 80 |
| ZVM10030 | 30 | | |
| ZVM10040 | 40 | | |
| ZVM10050 | 50 | | |
| ZVM10060 | 60 | | |
| ZVM10080 | 80 | | |
| ZVM10100 | 100 | | |
| ZVM10120 | 120 | | |
| ZVL10020 | 20 | | 135 |
| ZVL10030 | 30 | | |
| ZVL10040 | 40 | | |
| ZVL10050 | 50 | | |
| ZVL10060 | 60 | | |
| ZVL10080 | 80 | | |
| ZVL10100 | 100 | | |
| ZVL10120 | 120 | | |
| ZVM12020 | 20 | 12 | 80 |
| ZVM12030 | 30 | | |
| ZVM12040 | 40 | | |
| ZVM12050 | 50 | | |
| ZVM12060 | 60 | | |
| ZVM12080 | 80 | | |
| ZVM12100 | 100 | | |
| ZVM12120 | 120 | | |
| ZVL12020 | 20 | | 135 |
| ZVL12030 | 30 | | |
| ZVL12040 | 40 | | |
| ZVL12050 | 50 | | |
| ZVL12060 | 60 | | |
| ZVL12080 | 80 | | |
| ZVL12100 | 100 | | |
| ZVL12120 | 120 | | |
| ZVM14020 | 20 | 14 | 80 |
| ZVM14030 | 30 | | |
| ZVM14040 | 40 | | |
| ZVM14050 | 50 | | |
| ZVM14060 | 60 | | |
| ZVM14080 | 80 | | |
| ZVM14100 | 100 | | |
| ZVM14120 | 120 | | |
| ZVL14020 | 20 | | 135 |
| ZVL14030 | 30 | | |
| ZVL14040 | 40 | | |
| ZVL14050 | 50 | | |
| ZVL14060 | 60 | | |
| ZVL14080 | 80 | | |
| ZVL14100 | 100 | | |
| ZVL14120 | 120 | | |

0.035" guidewire compatible

LifeStream™ Balloon Expandable Vascular Covered Stent

| 80 cm Catheter Length | | | | |
|-----------------------|--------------------------------------|--------------------------------------|----------------------------|------------------------|
| Order code | Expanded Covered Stent Diameter (mm) | Compressed Covered Stent Length (mm) | Rated Burst Pressure (atm) | Recommended Introducer |
| LSM0800526 | 5 | 26 | 12 | 6F |
| LSM0800537 | | 37 | 12 | 6F |
| LSM0800616 | 6 | 16 | 12 | 6F |
| LSM0800626 | | 26 | 12 | 6F |
| LSM0800637 | | 37 | 12 | 6F |
| LSM0800658 | | 58 | 12 | 7F |
| LSM0800716 | 7 | 16 | 12 | 6F |
| LSM0800726 | | 26 | 12 | 6F |
| LSM0800737 | | 37 | 12 | 7F |
| LSM0800758 | | 58 | 12 | 7F |
| LSM0800816 | 8 | 16 | 12 | 7F |
| LSM0800826 | | 26 | 12 | 7F |
| LSM0800837 | | 37 | 12 | 7F |
| LSM0800858 | | 58 | 12 | 7F |
| LSM0800938 | 9 | 38 | 12 | 7F |
| LSM0800958 | | 58 | 12 | 7F |
| LSM0801038 | 10 | 38 | 12 | 8F |
| LSM0801058 | | 58 | 12 | 8F |
| LSM0801238 | 12 | 38 | 12 | 8F |
| LSM0801258 | | 58 | 12 | 8F |

| 135 cm Catheter Length | | | | |
|------------------------|--------------------------------------|--------------------------------------|----------------------------|------------------------|
| Order code | Expanded Covered Stent Diameter (mm) | Compressed Covered Stent Length (mm) | Rated Burst Pressure (atm) | Recommended Introducer |
| LSM1350526 | 5 | 26 | 12 | 6F |
| LSM1350537 | | 37 | 12 | 6F |
| LSM1350616 | 6 | 16 | 12 | 6F |
| LSM1350626 | | 26 | 12 | 6F |
| LSM1350637 | | 37 | 12 | 6F |
| LSM1350658 | | 58 | 12 | 7F |
| LSM1350716 | 7 | 16 | 12 | 6F |
| LSM1350726 | | 26 | 12 | 6F |
| LSM1350737 | | 37 | 12 | 7F |
| LSM1350758 | | 58 | 12 | 7F |
| LSM1350816 | 8 | 16 | 12 | 7F |
| LSM1350826 | | 26 | 12 | 7F |
| LSM1350837 | | 37 | 12 | 7F |
| LSM1350858 | | 58 | 12 | 7F |
| LSM1350938 | 9 | 38 | 12 | 7F |
| LSM1350958 | | 58 | 12 | 7F |
| LSM1351038 | 10 | 38 | 12 | 8F |
| LSM1351058 | | 58 | 12 | 8F |
| LSM1351238 | 12 | 38 | 12 | 8F |
| LSM1351258 | | 58 | 12 | 8F |

Units per case: 1

Covera™ Plus Vascular Covered Stent

| Order code | | Implant Diameter (mm) | Implant Length (mm) | Recommended Introducer |
|--------------------------------|--------------|-----------------------|---------------------|------------------------|
| Straight System Working Length | | | | |
| 80cm | 120cm | | | |
| AASME06030 | AASLE06030 | 6 | 30 mm | 8F |
| AASME06040 | AASLE06040 | | 40 mm | 8F |
| AASME06060 | AASLE06060 | | 60 mm | 8F |
| AASME06080 | AASLE06080 | | 80 mm | 8F |
| AASME06100 | AASLE06100 | | 100 mm | 8F |
| AASME07030 | AASLE07030 | 7 | 30 mm | 8F |
| AASME07040 | AASLE07040 | | 40 mm | 8F |
| AASME07060 | AASLE07060 | | 60 mm | 8F |
| AASME07080 | AASLE07080 | | 80 mm | 8F |
| AASME07100 | AASLE07100 | | 100 mm | 8F |
| AASME08030 | AASLE08030 | 8 | 30 mm | 8F |
| AASME08040 | AASLE08040 | | 40 mm | 8F |
| AASME08060 | AASLE08060 | | 60 mm | 8F |
| AASME08080 | AASLE08080 | | 80 mm | 8F |
| AASME08100 | AASLE08100 | | 100 mm | 9F |
| AASME09030 | AASLE09030 | 9 | 30 mm | 8F |
| AASMED9040 | AASLE09040 | | 40 mm | 8F |
| AASME09060 | AASLE09060 | | 60 mm | 8F |
| AASME09080 | AASLE09080 | | 80 mm | 8F |
| AASME09100 | AASLE09100 | | 100 mm | 9F |
| AASME10030 | AASLE10030 | 10 | 30 mm | 8F |
| AASME10040 | AASLE10040 | | 40 mm | 8F |
| AASME10060 | AASLE10060 | | 60 mm | 8F |
| AASME10080 | AASLE10080 | | 80 mm | 9F |
| AASME10100 | AASLE10100 | | 100 mm | 9F |

0.035" guidewire compatible

Units per case: 1

Fluency™ Plus Endovascular Stent Graft

| Order code | Stent Length (mm) | Explanded Stent Graft Diameter (mm) | Deployment System Length (cm) | Delivery System Diameter (F) | Order code | Stent Length (mm) | Explanded Stent Graft Diameter (mm) | Deployment System Length (cm) | Delivery System Diameter (F) | | |
|------------|-------------------|-------------------------------------|-------------------------------|------------------------------|------------|-------------------|-------------------------------------|-------------------------------|------------------------------|----|---|
| FVM05020 | 20 | 5 | 80 | 8 | FVM07020 | 20 | 7 | 80 | 8 | | |
| FVM05030 | 30 | | | 8 | FVM07030 | 30 | | | 8 | | |
| FVM05040 | 40 | | | 8 | FVM07040 | 40 | | | 8 | | |
| FVM05060 | 60 | | | 8 | FVM07060 | 60 | | | 8 | | |
| FVM05080 | 80 | | | 8 | FVM07080 | 80 | | | 9 | | |
| FVM05100 | 100 | | | 8 | FVM07100 | 100 | | | 9 | | |
| FVM05120 | 120 | | 8 | FVM07120 | 120 | 9 | | | | | |
| FVL05020 | 20 | | 117 | 80 | 8 | FVL07020 | | 20 | 117 | 80 | 8 |
| FVL05030 | 30 | | | | 8 | FVL07030 | | 30 | | | 8 |
| FVL05040 | 40 | | | | 8 | FVL07040 | | 40 | | | 8 |
| FVL05060 | 60 | | | | 8 | FVL07060 | | 60 | | | 8 |
| FVL05080 | 80 | | | | 8 | FVL07080 | | 80 | | | 9 |
| FVL05100 | 100 | 8 | | | FVL07100 | 100 | 9 | | | | |
| FVL05120 | 120 | 8 | | FVL07120 | 120 | 9 | | | | | |
| FVM06020 | 20 | 6 | | 80 | 8 | FVM08020 | 20 | 8 | | 80 | 9 |
| FVM06030 | 30 | | | | 8 | FVM08030 | 30 | | | | 9 |
| FVM06040 | 40 | | | | 8 | FVM08040 | 40 | | | | 9 |
| FVM06060 | 60 | | | | 8 | FVM08060 | 60 | | | | 9 |
| FVM06080 | 80 | | | | 8 | FVM08080 | 80 | | | | 9 |
| FVM06100 | 100 | | 8 | | FVM08100 | 100 | 9 | | | | |
| FVM06120 | 120 | | 8 | FVM08120 | 120 | 9 | | | | | |
| FVL06020 | 20 | | 117 | 80 | 8 | FVL08020 | 20 | | 117 | 80 | 9 |
| FVL06030 | 30 | | | | 8 | FVL08030 | 30 | | | | 9 |
| FVL06040 | 40 | | | | 8 | FVL08040 | 40 | | | | 8 |
| FVL06060 | 60 | | | | 8 | FVL08060 | 60 | | | | 9 |
| FVL06080 | 80 | | | | 8 | FVL08080 | 80 | | | | 9 |
| FVL06100 | 100 | 8 | | | FVL08100 | 100 | 9 | | | | |
| FVL06120 | 120 | 8 | | FVL08120 | 120 | 9 | | | | | |

0.035" guidewire compatible

Units per case: 1

Fluency™ Plus Endovascular Stent Graft

| Order code | Stent Length (mm) | Explanded Stent Graft Diameter (mm) | Deployment System Length (cm) | Delivery System Diameter (F) | |
|------------|-------------------|-------------------------------------|-------------------------------|------------------------------|----|
| FVM09030 | 30 | 9 | 80 | 9 | |
| FVM09040 | 40 | | | 9 | |
| FVM09060 | 60 | | | 9 | |
| FVM09080 | 80 | | | 9 | |
| FVM09100 | 100 | | | 9 | |
| FVM09120 | 120 | | | 9 | |
| FVL09030 | 30 | | 117 | 80 | 9 |
| FVL09040 | 40 | | | | 9 |
| FVL09060 | 60 | | | | 9 |
| FVL09080 | 80 | | | | 9 |
| FVL09100 | 100 | | | | 9 |
| FVL09120 | 120 | | | | 9 |
| FVM10030 | 30 | 10 | | 80 | 9 |
| FVM10040 | 40 | | | | 9 |
| FVM10060 | 60 | | | | 9 |
| FVM10080 | 80 | | | | 9 |
| FVM10100 | 100 | | | | 9 |
| FVM10120 | 120 | | | | 9 |
| FVL10030 | 30 | | 117 | 80 | 9 |
| FVL10040 | 40 | | | | 9 |
| FVL10060 | 60 | | | | 9 |
| FVL10080 | 80 | | | | 9 |
| FVL10100 | 100 | | | | 9 |
| FVL10120 | 120 | | | | 9 |
| FVM12030 | 30 | 12 | | 80 | 10 |
| FVM12040 | 40 | | | | 10 |
| FVM12060 | 60 | | | | 10 |
| FVM12080 | 80 | | | | 10 |
| FVM12100 | 100 | | | | 10 |
| FVM12120 | 120 | | | | 10 |
| FVL12030 | 30 | | 13.5 | 80 | 10 |
| FVL12040 | 40 | | | | 10 |
| FVL12060 | 60 | | | | 10 |
| FVL12080 | 80 | | | | 10 |
| FVL12100 | 100 | | | | 10 |
| FVL12120 | 120 | | | | 10 |
| FVM14030 | 30 | 13.5 | | 80 | 10 |
| FVM14040 | 40 | | | | 10 |
| FVM14060 | 60 | | | | 10 |
| FVM14080 | 80 | | | | 10 |
| FVM14100 | 100 | | | | 10 |
| FVM14120 | 120 | | | | 10 |
| FVL14030 | 30 | | 117 | 80 | 10 |
| FVL14040 | 40 | | | | 10 |
| FVL14060 | 60 | | | | 10 |
| FVL14080 | 80 | | | | 10 |
| FVL14100 | 100 | | | | 10 |
| FVL14120 | 120 | | | | 10 |

0.035" guidewire compatible

Units per case: 1

Join our cause to Love Your Limbs™

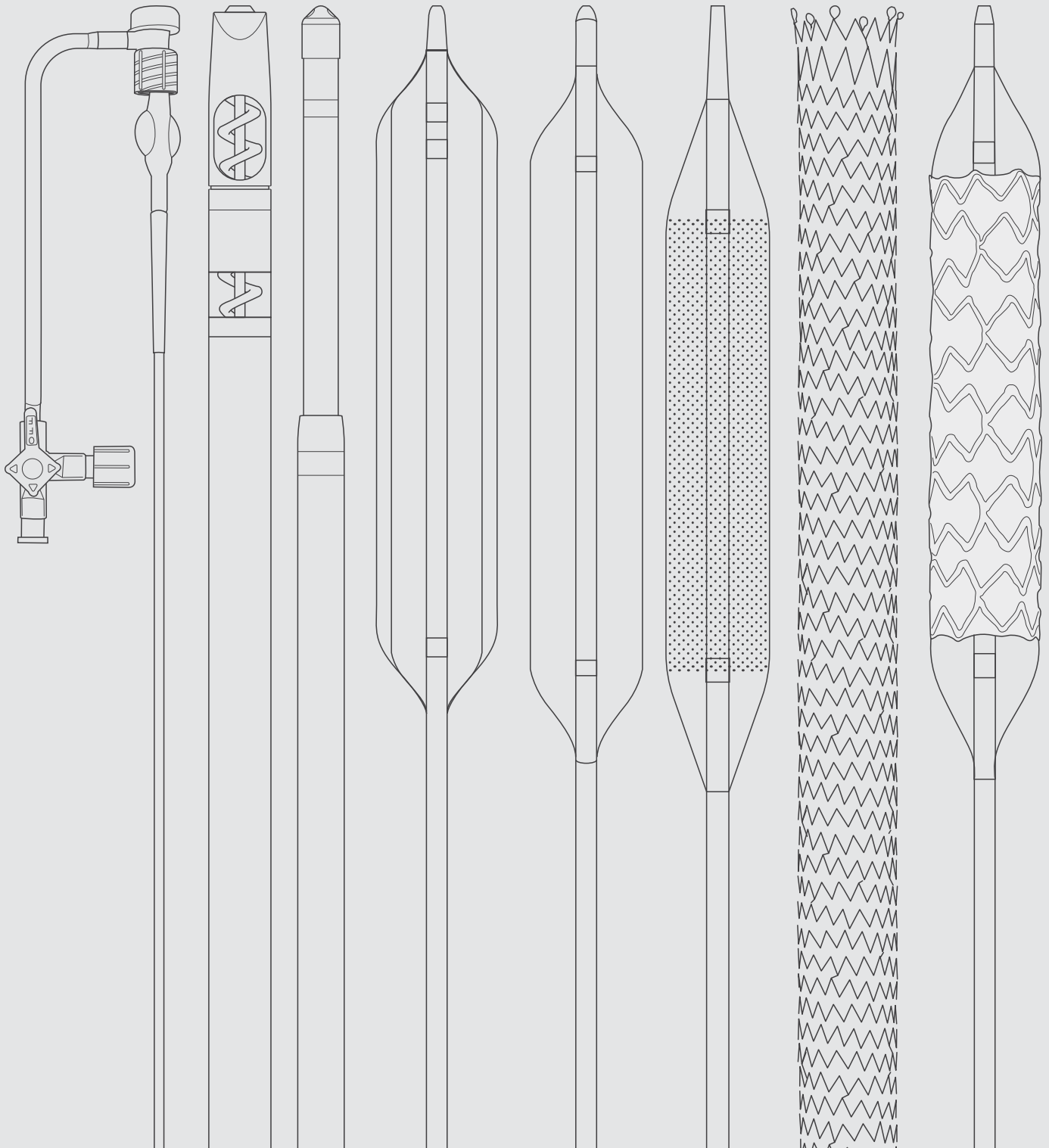
In 2013, BD (formerly Bard) launched the first ever patient awareness campaign focused on educating the public about the risks and symptoms of PAD. The Love Your Limbs™ Campaign provides educational support for the estimated 18 million Americans with PAD and more than 200 million patients worldwide. Available resources included:

1. Engaging and interactive PAD website
2. Patient education resources
3. Patient stories
4. Physician finder tool
5. Physician education resources
6. Physician testimonials

Join the cause and take part in the fight against PAD. Visit LoveYourLimbs.com for more information.



www.loveyourlimbs.com
www.loveyourlimbs.com/uk/



bd.com

BD Switzerland Sarl, Terre Bonne Park – A4, Route De Crassier, 17, 1262 Eysins, Vaud. Switzerland.



Each product has different Indications for Use. Please refer to the relevant product's IFU for all applicable indications, contraindications, warnings, and precautions.

BD, the BD Logo, Checker-Flex, Crosser, GeoAlign, Halo One, LifeStent, LifeStent Solo, LifeStream, Lutonix, QuantaFlo, Rotarex, Seeker, Ultra-Cross, UltraScore, and Ultraverse are trademarks of Becton, Dickinson and Company or its affiliates. All other trademarks are the properties of their respective owners. © 2021 BD. All Rights Reserved. Illustrations by Mike Austin. Copyright 2021. Bard and Straub have joined BD. BD-37242